

# PXI LCR Bundles

PC-based LCR Meters & SMUs with interactive measurement software

## Use PXI LCR Bundles for

- CV/IV testing with high channel density and no connection changes at the device under test (DUT)
- MEMS Structure Electrical Test
- Wafer Parametric Test
- Multilayer Ceramic Capacitor (MLCC) Validation & Test
- Combining measurements from different instruments in one system



## Popular Features

### 2-in-1

SMU and LCR meter combined in single instrument for an elegant bench solution

### Scalability

Combine with other types of instruments to build tightly integrated mixed-signal test systems

### Precision

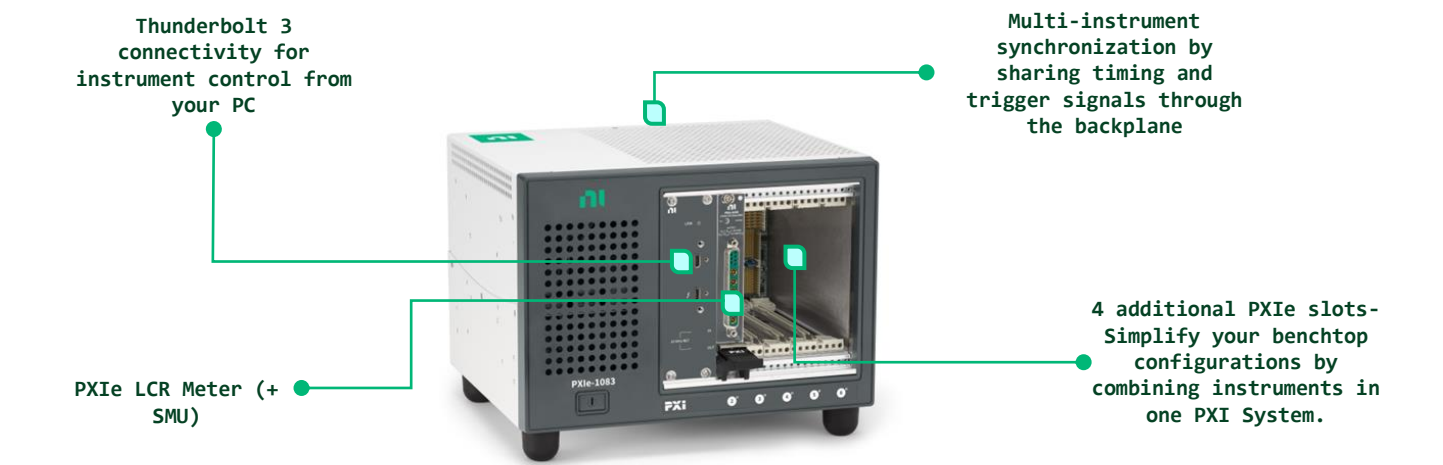
Femtofarad-class capacitance measurements and femtoampere-class current measurements



# Do more in one box with NI PXI

The NI PXI LCR Bundles include a PXIe LCR Meter in a 5-slot PXI Express based measurement system that is controlled through your laptop's Thunderbolt™ USB-C port.

Achieve high accuracy, high productivity, and higher speeds with the standard for automated test and automated measurement: NI PXI (PCI eXtensions for Instrumentation).



Make DC and impedance measurements in a seamless fashion with NI's PXIe-4190 - the world's first LCR Meter and SMU in a single instrument. This instrument provides femto-farad (10-15) class capacitance measurements and femto-amp current measurements in a single-slot PXI form factor. The new PXIe-4190 also removes the need for an additional switch to multiplex between the LCR Meter and SMU, allowing for a simplified test experience with higher throughput and lower capital cost.

	PXIe-LCR5100 P/N: 867113-01	PXIe-LCR5101 P/N: 867126-01
What is Included		
Chassis	PXIe-1083	
Module	PXIe-4190 (40V)	PXIe-4190 (10 V)
Accessories	Thunderbolt cable Power cable, US DSub-to-BNC cable for I/O connectivity	
Key Specifications		
Bandwidth	2 MHz	500 kHz
Voltage Range	± 40 V DC Bias	± 10 V DC Bias
Max Current	100 mA	100 mA
Current Ranges	100 mA, 10 mA, 1 mA 100 µA, 10 µA, 1uA, 10nA, 1nA	-100 mA - 100 mA



# Upgrade and do more with your system!

Don't be limited by vendor-defined configurations. Use the remaining 4 slots to build on top of your system and manage change. Add measurements, more channels, or new analysis routines without having to purchase a whole new instrument.

## Start with these best-selling modules



P/N: 783129-01

### Digital Multimeter

#### PXIe-4080

- 6 ½ digit,  $\pm 300$  V,  $\pm 1$  A
- 2- or 4-wire resistance measurements up to  $5\text{ G}\Omega$
- Isolated Digitizer mode - Up to 1.8 MS/s
- Frequency/period measurements
- Diode tests



P/N: 783590-02

### Oscilloscope

#### PXIe-5105

- 8 simultaneously-sampled channels
- 12-bit vertical resolution
- 60 MHz Bandwidth
- 60 MS/s sample rate



P/N: 781056-01

### Multifunction IO

#### PXIe-6363

- 32 Analog Input (16-bit, 2 MS/s)
- 4 Analog Output
- 48 DIO channels
- 4 32-bit counter/timers



P/N: 785114-01

### Waveform Generator

#### PXIe-5413

- 20 MHz Bandwidth
- Up to two 16-bit channels
- 800 MS/s
- $\pm 12$  V output range



P/N: 779647-11

### Power Supply

#### PXIe-4110

- Two isolated channels
- Single non-isolated channel
- Up to 20 V, 1 A per channel
- Up to 46 W output power
- Hardware timing and triggering
- Output disconnect relays
- Four-wire remote sense



P/N: 780587-27

### Multiplexer Switch

#### PXIe-2527

- 32 channel, 2-wire, 300 V, 2 A
- Electromechanical relay
- Supports 64x1 1-wire, 32x 2 2-wire, 16x1 4-wire configurations
- Onboard relay counting

Explore over 600 different PXI modules ranging from DC to mmWave.  
Contact your NI product expert to get help solving your test challenges.



# Select your software

## Interactive Measurement with InstrumentStudio

- **Control** all your instruments in a single, intuitive no-code application software.
- **Capture** screenshots, **export** data, and **share** projects with colleagues and between systems.
- **Monitor and debug** automated test systems

[Free! – Download Now](#)

## Graphical Programming in LabVIEW

- **Acquire, process, and analyze data** from NI hardware or any 3<sup>rd</sup> party instrument
- **Create interactive UIs** for test monitoring and control.
- **Save data** to .csv, .tdms, or any custom-defined binary file.

## Use Your Programming Language of Choice

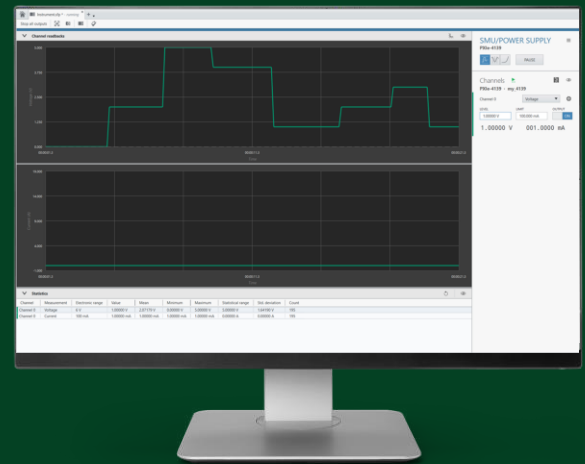
- **Drivers** for Python, C, C++, C#, .NET, and MATLAB®\*

## A Bundle of Software for Test

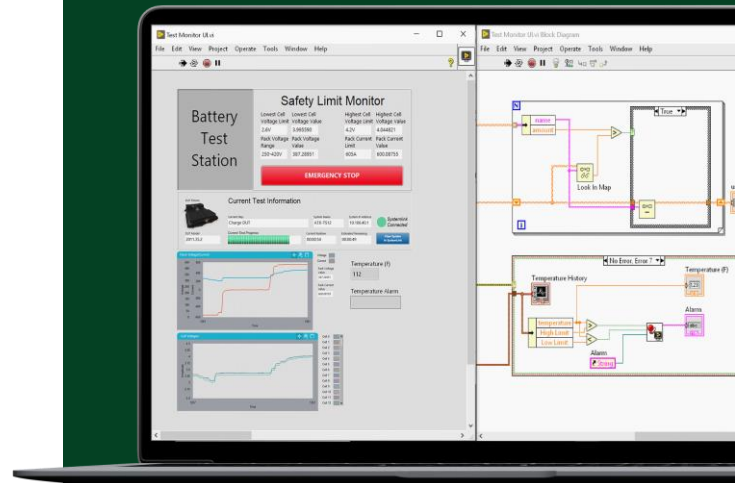
- **Develop** test systems faster with graphical programming in LabVIEW
- **Create** automated test sequences with TestStand
- **Build** web applications for test with G Web Development Software
- **Analyze** your data interactively with DIAdem
- **Perform** data acquisition and logging with FlexLogger

US Corporate Headquarters  
11500 N Mopac Expwy,  
Austin, TX 78759-3504  
T: 512 683 0100 F: 512 683 9300  
[info@ni.com](mailto:info@ni.com)

MATLAB® IS A REGISTERED TRADEMARK OF THE MATHWORKS, INC. OTHER PRODUCT AND COMPANY NAMES LISTED ARE TRADEMARKS OR TRADE NAMES OF THEIR RESPECTIVE COMPANIES.



With InstrumentStudio, view data from all your instruments unified on high-resolution monitors rather than small, integrated displays.



"The move to a COTS approach using PXI and LabVIEW was critical to this production-test success at Philips. The combination of best-in-class modular hardware along with industry-standard software was pivotal to the millions of dollars and hundreds of hours saved in production test engineering"

-Neil Evans  
Senior Manager, Philips

