

DESIGNED & DIMENSIONED
IN INCHES [MILLIMETERS]

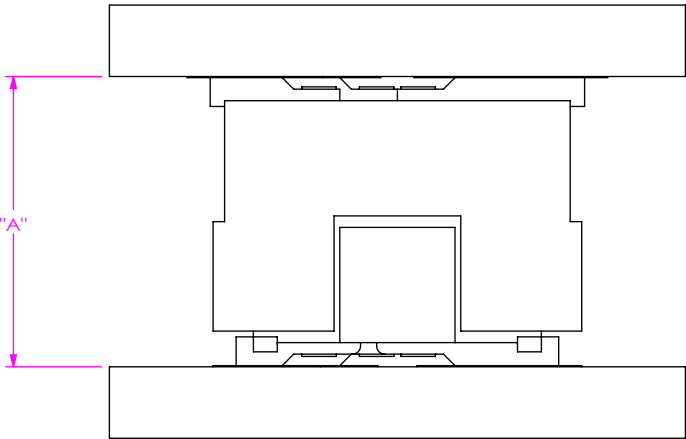


FIG 1
SOLC MATE WITH TOLC

TABLE 1				
LEAD STYLE	SOLC -02		WIPE	
	"A" FULLY MATED	"A" MAX	FULLY MATED	MIN
TOLC-02	.250 [6.35]	.289 [7.34]	.054 [1.37]	.015 [0.38]
TOLC-12	.315 [8.00]	.354 [8.99]	.054 [1.37]	.015 [0.38]
TOLC-22	.394 [10.00]	.433 [10.99]	.054 [1.37]	.015 [0.38]
TOLC-32	.472 [12.00]	.511 [12.99]	.054 [1.37]	.015 [0.38]

- NOTES:
- 1. ALL DIMENSIONS BASED ON NOMINAL VALUES FOR SAMTEC RECOMMENDED PCB LAYOUTS.
 - 2. ALTHOUGH MAXIMUM DIMENSIONS OF ALLOWABLE SEPARATION FROM FULLY MATING THE COMPONENTS ARE LISTED, SAMTEC RECOMMENDS FULL MATING.

• PROPRIETARY NOTE •
THIS DOCUMENT CONTAINS CONFIDENTIAL AND PROPRIETARY INFORMATION AND ALL DESIGN, MANUFACTURING, REPRODUCTION, USE, PATENT RIGHTS AND SALES RIGHTS ARE EXPRESSLY RESERVED BY SAMTEC, INC. THIS DOCUMENT SHALL NOT BE DISCLOSED, IN WHOLE OR PART, TO ANY UNAUTHORIZED PERSON OR ENTITY NOR REPRODUCED, TRANSFERRED OR INCORPORATED IN ANY OTHER PROJECT IN ANY MANNER WITHOUT THE EXPRESS WRITTEN CONSENT OF SAMTEC, INC.



520 PARK EAST BLVD, NEW ALBANY, IN 47150
PHONE: 812-944-6733 FAX: 812-948-5047
e-Mail info@SAMTEC.com code 55322