

DO NOT
SCALE FROM
THIS PRINT

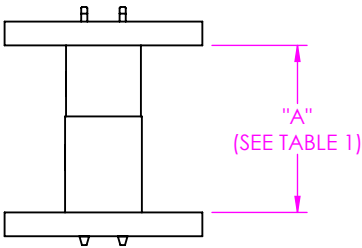


FIG 1
IPT1-0X- D MATED WITH IPS1-X1-D

TABLE 1					
		IPS1-D LEAD STYLE		WIPE	
		-X1			
		"A" FULLY MATED	"A" MAX	FULLY MATED	MIN @ "A" MAX
IPT1-D LEAD STYLE	-01	.435 [11.05]	.453 [11.51]	.033 [0.84]	.015 [0.38]
	-02	.551 [14.00]	.569 [14.45]	.033 [0.84]	.015 [0.38]
	-03	.630 [16.00]	.648 [16.46]	.033 [0.84]	.015 [0.38]
	-04	.669 [16.99]	.687 [17.45]	.033 [0.84]	.015 [0.38]
	-05	.748 [19.00]	.766 [19.46]	.033 [0.84]	.015 [0.38]
	-06	.787 [19.99]	.805 [20.45]	.033 [0.84]	.015 [0.38]
	-07	.984 [24.99]	1.002 [25.45]	.033 [0.84]	.015 [0.38]
	-08	1.181 [30.00]	1.199 [30.45]	.033 [0.84]	.015 [0.38]
	-09	1.378 [35.00]	1.396 [35.46]	.033 [0.84]	.015 [0.38]

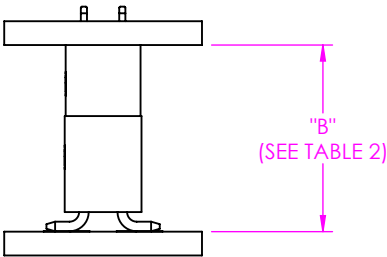


FIG 2
IPT1-01-D-VS MATED WITH IPS1-X1-D

TABLE 2					
		IPS1-D LEAD STYLE		WIPE	
		-X1			
		"B" FULLY MATED	"B" MAX	FULLY MATED	MIN @ "B" MAX
IPT1-D-VS LEAD STYLE	-01	.486 [12.34]	.504 [12.80]	.033 [0.84]	.015 [0.38]

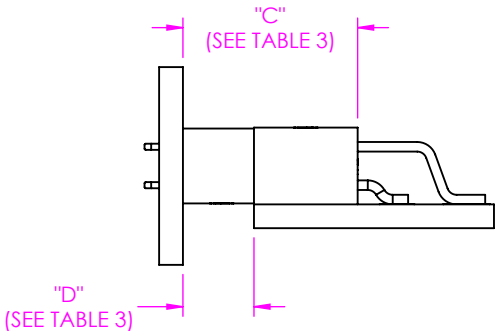


FIG 3
IPT1-01-D-DH MATED WITH IPS1-X1-D

TABLE 3							
		IPS1-D LEAD STYLE				WIPE	
		-X1					
		"C" FULLY MATED	"C" MAX	"D" FULLY MATED	"D" MAX	FULLY MATED	MIN @ "C" MAX
IPT1-D-VS LEAD STYLE	-01	.455 [11.56]	.437 [11.10]	.185 [4.70]	.203 [5.16]	.033 [0.84]	.015 [0.38]

NOTES:
1. ALL DIMENSIONS BASED ON NOMINAL VALUES FOR SAMTEC RECOMMENDED PCB LAYOUTS.
2. ALTHOUGH MAX DIMENSIONS ARE LISTED SAMTEC RECOMMENDS FULLY MATING COMPONENTS.

• PROPRIETARY NOTE •
THIS DOCUMENT CONTAINS CONFIDENTIAL AND
PROPRIETARY INFORMATION AND ALL DESIGN,
MANUFACTURING, REPRODUCTION, USE, PATENT RIGHTS
AND SALES RIGHTS ARE EXPRESSLY RESERVED BY SAMTEC,
INC. THIS DOCUMENT SHALL NOT BE DISCLOSED, IN WHOLE
OR PART, TO ANY UNAUTHORIZED PERSON OR ENTITY NOR
REPRODUCED, TRANSFERRED OR INCORPORATED IN ANY
OTHER PROJECT IN ANY MANNER WITHOUT THE EXPRESS
WRITTEN CONSENT OF SAMTEC, INC.



520 PARK EAST BLVD, NEW ALBANY, IN 47150
PHONE: 812-944-6733 FAX: 812-948-5047
e-Mail info@SAMTEC.com code 55322

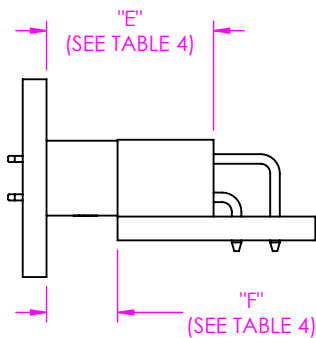


FIG 4
IPT1-01-D-RA MATED WITH IPS1-X1-D

TABLE 4							
		IPS1-D LEAD STYLE				WIPE	
		-X1					
		"E" FULLY MATED	"E" MAX	"F" FULLY MATED	"F" MAX	FULLY MATED	MIN @ "E" MAX
IPT1-D-DH LEAD STYLE	-01	.435 [11.05]	.453 [11.51]	.185 [4.70]	.203 [5.16]	.033 [0.84]	.015 [0.38]

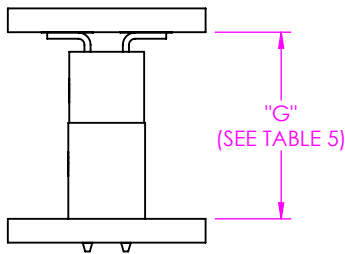


FIG 5
IPT1-0X-D MATED WITH IPS1-01-D-VS

TABLE 5					
		IPS1-D-VS LEAD STYLE		WIPE	
		-01			
		"G" FULLY MATED	"G" MAX	FULLY MATED	MIN @ "G" MAX
IPT1-D LEAD STYLE	-01	.486 [12.34]	.504 [12.80]	.033 [0.84]	.015 [0.38]
	-02	.602 [15.29]	.620 [15.75]	.033 [0.84]	.015 [0.38]
	-03	.681 [17.30]	.699 [17.75]	.033 [0.84]	.015 [0.38]
	-04	.720 [18.29]	.738 [18.75]	.033 [0.84]	.015 [0.38]
	-05	.799 [20.29]	.817 [20.75]	.033 [0.84]	.015 [0.38]
	-06	.838 [21.29]	.856 [21.74]	.033 [0.84]	.015 [0.38]
	-07	1.035 [26.29]	1.053 [26.75]	.033 [0.84]	.015 [0.38]
	-08	1.232 [31.29]	1.250 [31.75]	.033 [0.84]	.015 [0.38]
	-09	1.429 [36.30]	1.447 [36.75]	.033 [0.84]	.015 [0.38]

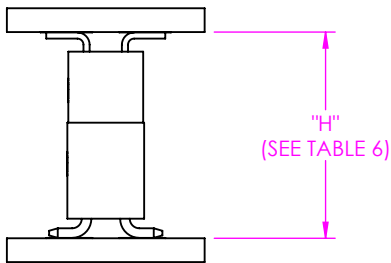


FIG 6
IPT1-01-D-VS MATED WITH IPS1-01-D-VS

TABLE 6					
		IPS1-D-VS LEAD STYLE		WIPE	
		-01			
		"H" FULLY MATED	"H" MAX	FULLY MATED	MIN @ "H" MAX
IPT1-D-VS LEAD STYLE	-01	.537 [13.64]	.555 [14.10]	.033 [0.84]	.015 [0.38]

* PROPRIETARY NOTE *

THIS DOCUMENT CONTAINS CONFIDENTIAL AND PROPRIETARY INFORMATION AND ALL DESIGN, MANUFACTURING, REPRODUCTION, USE, PATENT RIGHTS AND SALES RIGHTS ARE EXPRESSLY RESERVED BY SAMTEC, INC. THIS DOCUMENT SHALL NOT BE DISCLOSED, IN WHOLE OR PART, TO ANY UNAUTHORIZED PERSON OR ENTITY NOR REPRODUCED, TRANSFERRED OR INCORPORATED IN ANY OTHER PROJECT IN ANY MANNER WITHOUT THE EXPRESS WRITTEN CONSENT OF SAMTEC, INC.



520 PARK EAST BLVD, NEW ALBANY, IN 47150
PHONE: 812-944-6733 FAX: 812-948-5047
e-Mail info@SAMTEC.com code 55322
SHEET 2 OF 4

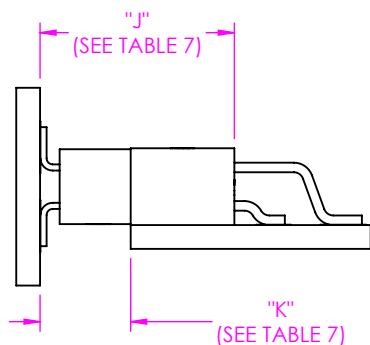


FIG 7
IPT1-01-D-DH MATED WITH IPS1-01-D-VS

TABLE 7							
		IPS1-D-VS LEAD STYLE				WIPE	
		-01					
		"J" FULLY MATED	"J" MAX	"K" FULLY MATED	"K" MAX	FULLY MATED	MIN @ "J" MAX
IPT1-D-DH LEAD STYLE	-01	.506 [12.85]	.524 [13.31]	.236 [5.99]	.254 [6.45]	.033 [0.84]	.015 [0.38]

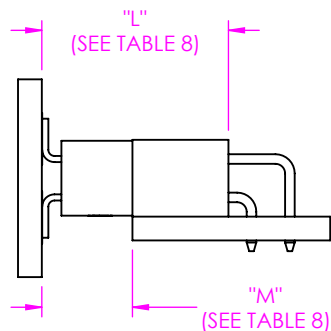


FIG 8
IPT1-01-D-RA MATED WITH IPS1-01-D-VS

TABLE 8							
		IPS1-D-VS LEAD STYLE				WIPE	
		-X1					
		"L" FULLY MATED	"L" MAX	"M" FULLY MATED	"M" MAX	FULLY MATED	MIN @ "L" MAX
IPT1-D-RA LEAD STYLE	-01	.486 [12.34]	.468 [11.89]	.236 [5.99]	.254 [6.45]	.033 [0.84]	.015 [0.38]

TABLE 9							
		IPS1-D-RA LEAD STYLE				WIPE	
		-01					
		"N" FULLY MATED	"N" MAX	"P" FULLY MATED	"P" MAX	FULLY MATED	MIN @ "N" MAX
IPT1-D LEAD STYLE	-01	.435 [11.05]	.453 [11.51]	.250 [6.35]	.268 [6.81]	.033 [0.84]	.015 [0.38]
	-02	.551 [14.00]	.569 [14.45]	.366 [9.30]	.384 [9.75]	.033 [0.84]	.015 [0.38]
	-03	.630 [16.00]	.648 [16.46]	.445 [11.30]	.463 [11.76]	.033 [0.84]	.015 [0.38]
	-04	.669 [16.99]	.687 [17.45]	.484 [12.29]	.502 [12.75]	.033 [0.84]	.015 [0.38]
	-05	.748 [19.00]	.766 [19.46]	.563 [14.30]	.581 [14.76]	.033 [0.84]	.015 [0.38]
	-06	.787 [19.99]	.805 [20.45]	.602 [15.29]	.620 [15.75]	.033 [0.84]	.015 [0.38]
	-07	.984 [24.99]	1.002 [25.45]	.799 [20.29]	.817 [20.75]	.033 [0.84]	.015 [0.38]
	-08	1.181 [30.00]	1.199 [30.45]	.996 [25.30]	1.014 [25.76]	.033 [0.84]	.015 [0.38]
	-09	1.378 [35.00]	1.396 [35.46]	1.193 [30.30]	1.211 [30.76]	.033 [0.84]	.015 [0.38]

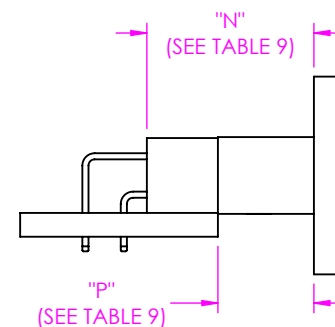


FIG 9
IPT1-0X-D MATED WITH IPS1-01-D-RA

• PROPRIETARY NOTE •
THIS DOCUMENT CONTAINS CONFIDENTIAL AND PROPRIETARY INFORMATION AND ALL DESIGN, MANUFACTURING, REPRODUCTION, USE, PATENT RIGHTS AND SALES RIGHTS ARE EXPRESSLY RESERVED BY SAMTEC, INC. THIS DOCUMENT SHALL NOT BE DISCLOSED, IN WHOLE OR PART, TO ANY UNAUTHORIZED PERSON OR ENTITY NOR REPRODUCED, TRANSFERRED OR INCORPORATED IN ANY OTHER PROJECT IN ANY MANNER WITHOUT THE EXPRESS WRITTEN CONSENT OF SAMTEC, INC.

samtec

520 PARK EAST BLVD, NEW ALBANY, IN 47150
PHONE: 812-944-6733 FAX: 812-948-5047
e-Mail info@SAMTEC.com code 55322

SHEET 3 OF 4

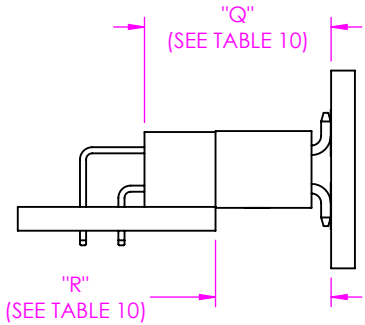


FIG 10
IPT1-01-D-VS MATED WITH IPS1-01-D-RA

TABLE 10							
		IPS1-D-RA LEAD STYLE				WIPE	
		-01					
		"Q" FULLY MATED	"Q" MAX	"R" FULLY MATED	"R" MAX	FULLY MATED	MIN @ "Q" MAX
IPT1-D-VS LEAD STYLE	-01	.486 [12.34]	.468 [11.89]	.301 [7.65]	.319 [8.10]	.033 [0.84]	.015 [0.38]

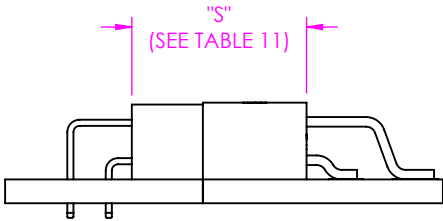


FIG 11
IPT1-01-D-DH MATED WITH IPS1-01-D-RA

TABLE 11					
		IPS1-D-RA LEAD STYLE		WIPE	
		-01			
		"S" FULLY MATED	"S" MAX	FULLY MATED	MIN @ "S" MAX
IPT1-D-DH LEAD STYLE	-01	.455 [11.56]	.473 [12.01]	.033 [0.84]	.015 [0.38]

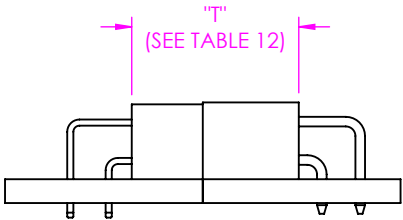


FIG 12
IPT1-01-D-RA MATED WITH IPS1-01-D-RA

TABLE 12					
		IPS1-D-RA LEAD STYLE		WIPE	
		-01			
		"T" FULLY MATED	"T" MAX	FULLY MATED	MIN @ "T" MAX
IPT1-D-RA LEAD STYLE	-01	.435 [11.05]	.453 [11.51]	.033 [0.84]	.015 [0.38]

• PROPRIETARY NOTE •
THIS DOCUMENT CONTAINS CONFIDENTIAL AND PROPRIETARY INFORMATION AND ALL DESIGN, MANUFACTURING, REPRODUCTION, USE, PATENT RIGHTS AND SALES RIGHTS ARE EXPRESSLY RESERVED BY SAMTEC, INC. THIS DOCUMENT SHALL NOT BE DISCLOSED, IN WHOLE OR PART, TO ANY UNAUTHORIZED PERSON OR ENTITY NOR REPRODUCED, TRANSFERRED OR INCORPORATED IN ANY OTHER PROJECT IN ANY MANNER WITHOUT THE EXPRESS WRITTEN CONSENT OF SAMTEC, INC.



520 PARK EAST BLVD, NEW ALBANY, IN 47150
PHONE: 812-944-6733 FAX: 812-948-5047
e-Mail info@SAMTEC.com code 55322
SHEET 4 OF 4