

DESIGNED & DIMENSIONED
IN INCHES[MILLIMETERS]

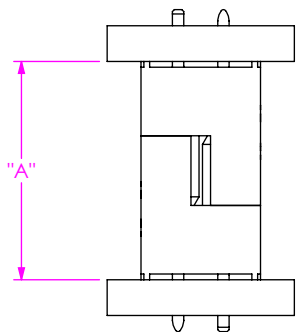


FIG 1
LS2-TH MATED WITH LS2-TH

LEAD STYLE	LS2-01(-TH)		WIPE	
	"A" FULLY MATED	"A" MAX	FULLY MATED	MIN
LS2- 01 (-TH)	.379 [9.63]	.386 [9.80]	.022 [0.56]	.015 [0.38]

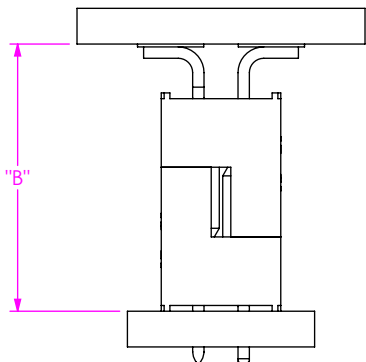


FIG 2
LS2-TH MATED WITH LS2-SM

LEAD STYLE	LS2-02 (-SM)		WIPE	
	"B" FULLY MATED	"B" MAX	FULLY MATED	MIN
LS2-01 (-TH)	.464 [11.78]	.471 [11.96]	.022 [0.56]	.015 [0.38]

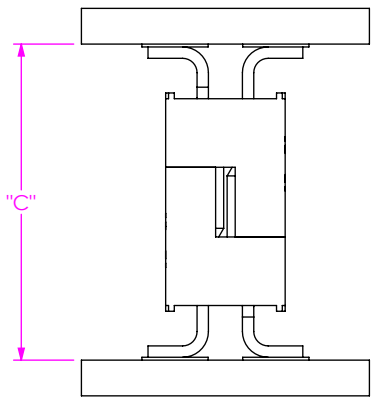


FIG 3
LS2-SM MATED WITH LS2-SM

LEAD STYLE	LS2-02 (-SM)		WIPE	
	"C" FULLY MATED	"C" MAX	FULLY MATED	MIN
LS2-02 (-SM)	.549 [13.94]	.556 [14.11]	.022 [0.56]	.015 [0.38]

- NOTES:
- 1. ALL DIMENSIONS BASED ON NOMINAL VALUES FOR SAMTEC RECOMMENDED PCB LAYOUTS.
 - 2. ALTHOUGH MAX DIMENSIONS ARE LISTED SAMTEC RECOMMENDS FULLY MATING COMPONENTS.

• PROPRIETARY NOTE •
THIS DOCUMENT CONTAINS CONFIDENTIAL AND
PROPRIETARY INFORMATION AND ALL DESIGN,
MANUFACTURING, REPRODUCTION, USE, PATENT RIGHTS
AND SALES RIGHTS ARE EXPRESSLY RESERVED BY SAMTEC,
INC. THIS DOCUMENT SHALL NOT BE DISCLOSED, IN WHOLE
OR PART, TO ANY UNAUTHORIZED PERSON OR ENTITY NOR
REPRODUCED, TRANSFERRED OR INCORPORATED IN ANY
OTHER PROJECT IN ANY MANNER WITHOUT THE EXPRESS
WRITTEN CONSENT OF SAMTEC, INC.



520 PARK EAST BLVD, NEW ALBANY, IN 47150
PHONE: 812-944-6733 FAX: 812-948-5047
e-Mail info@SAMTEC.com code 55322

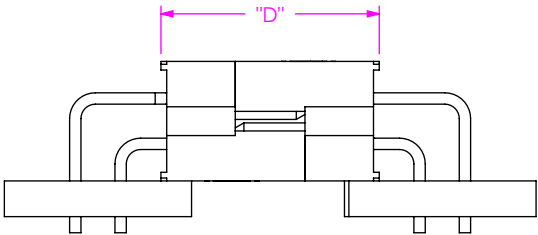


FIG 4
LS2-RA1 MATED WITH LS2-RA2

LEAD STYLE	LS2-01(-RA1)		WIPE	
	"D" FULLY MATED	"D" MAX	FULLY MATED	MIN
LS2- 01 (-RA2)	.379 [9.63]	.386 [9.80]	.022 [0.56]	.015 [0.38]

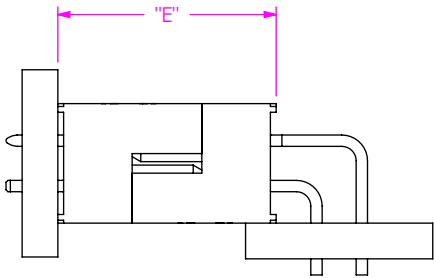


FIG 5
LS2-TH MATED WITH LS2-RAX

LEAD STYLE	LS2-01-RAX		WIPE	
	"E" FULLY MATED	"E" MAX	FULLY MATED	MIN
LS2-01 (-TH)	.379 [9.63]	.386 [9.80]	.022 [0.56]	.015 [0.38]

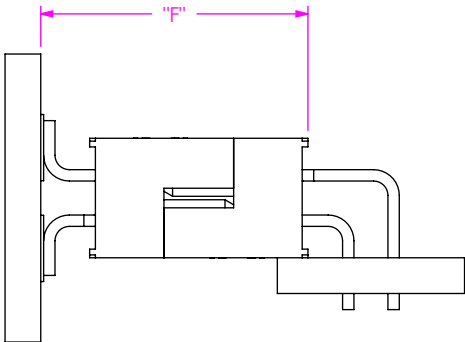


FIG 6
LS2-SM MATED WITH LS2-RAX

LEAD STYLE	LS2-01-RAX		WIPE	
	"F" FULLY MATED	"F" MAX	FULLY MATED	MIN
LS2-02 (-SM)	.464 [11.78]	.471 [11.96]	.022 [0.56]	.015 [0.38]

• PROPRIETARY NOTE •
THIS DOCUMENT CONTAINS CONFIDENTIAL AND PROPRIETARY INFORMATION AND ALL DESIGN, MANUFACTURING, REPRODUCTION, USE, PATENT RIGHTS AND SALES RIGHTS ARE EXPRESSLY RESERVED BY SAMTEC, INC. THIS DOCUMENT SHALL NOT BE DISCLOSED, IN WHOLE OR PART, TO ANY UNAUTHORIZED PERSON OR ENTITY NOR REPRODUCED, TRANSFERRED OR INCORPORATED IN ANY OTHER PROJECT IN ANY MANNER WITHOUT THE EXPRESS WRITTEN CONSENT OF SAMTEC, INC.



520 PARK EAST BLVD, NEW ALBANY, IN 47150
PHONE: 812-944-6733 FAX: 812-948-5047
e-Mail info@SAMTEC.com code 55322