

DO NOT
SCALE FROM
THIS PRINT

QRX8 MATED VIEWS

FIGURE 1
QRM8 MATED WITH QRF8

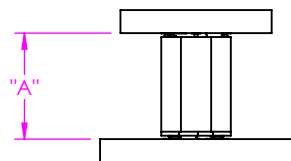


FIGURE 2
QRM8 MATED WITH QRF8-RA

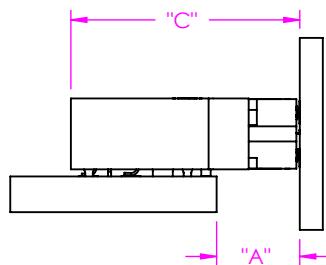


FIGURE 3
QRM8-RA MATED WITH QRF8

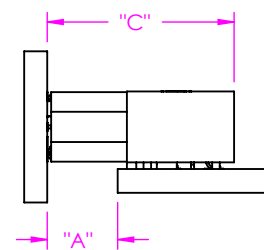
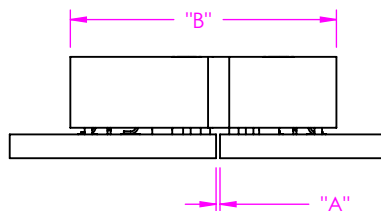


FIGURE 4
QRM8-RA MATED WITH QRF8-RA



NOTES:

1. ALL DIMENSIONS BASED ON NOMINAL VALUES FOR SAMTEC RECOMMENDED PCB LAYOUTS.
2. ALTHOUGH MAX DIMENSIONS ARE LISTED SAMTEC RECOMMENDS FULLY MATING COMPONENTS.

DESIGNED & DIMENSIONED
IN MILLIMETERS[INCHES]

	Fully Mated Board to Board Dimension ("A")	Max Board to Board Dimension ("A")	Fully Mated Connector to Connector Dimension ("B")	Max Connector to Connector Dimension ("B")	Fully Mated Connector to Board Dimension ("C")	Max Connector to Board Dimension ("C")	Min Contact Wipe	Max Contact Wipe
Fig. 1) QRM8 / QRF8	SEE TABLE 2	SEE TABLE 2 + 0.83 [0.033]	N/A	N/A	N/A	N/A	0.38 [0.015]	1.21 [0.048]
Fig. 2) QRM8 / QRF8-RA	SEE TABLE 3	SEE TABLE 3 + 0.83 [0.033]	N/A	N/A	SEE TABLE 3	SEE TABLE 3 + 0.83 [0.033]	0.38 [0.015]	1.21 [0.048]
Fig. 3) QRM8-RA / QRF8	SEE TABLE 4	SEE TABLE 4 + 0.83 [0.033]	N/A	N/A	SEE TABLE 4	SEE TABLE 4 + 0.83 [0.033]	0.38 [0.015]	1.21 [0.048]
Fig. 4) QRM8-RA / QRF8-RA	SEE TABLE 5	SEE TABLE 5 + 0.83 [0.033]	SEE TABLE 5	SEE TABLE 5 + 0.83 [0.033]	N/A	N/A	0.38 [0.015]	1.21 [0.048]

TABLE 2

		QRF8 LEAD STYLE	
		-05.0	-07.0
QRM8 LEAD STYLE	-02.0	7.00 [0.276]	9.00 [0.354]
	-05.0	10.00 [0.394]	12.00 [0.472]
	-07.0	12.00 [0.472]	14.00 [0.551]

TABLE 3

		QRF8-RA LEAD STYLE	
		-01.0	
		"A"	"C"
QRM8 LEAD STYLE	-02.0	2.50 [0.098]	12.14 [0.478]
	-05.0	5.50 [0.217]	15.14 [0.596]
	-07.0	7.50 [0.295]	17.14 [0.675]

TABLE 4

		QRF8 LEAD STYLE			
		-05.0		-07.0	
		"A"	"C"	"A"	"C"
QRM8-RA LEAD STYLE	-01.0	4.66 [0.183]	12.36 [0.487]	6.66 [0.262]	14.36 [0.565]

TABLE 5

		QRF8-RA LEAD STYLE	
		-01.0	
		"A"	"B"
QRM8-RA LEAD STYLE	-01.0	0.26 [0.010]	17.60 [0.693]

PROPRIETARY NOTE

THIS DOCUMENT CONTAINS INFORMATION CONFIDENTIAL AND PROPRIETARY TO SAMTEC, INC. AND SHALL NOT BE REPRODUCED OR TRANSFERRED TO OTHER DOCUMENTS OR DISCLOSED TO OTHERS OR USED FOR ANY PURPOSE OTHER THAN THAT WHICH IT WAS OBTAINED WITHOUT THE EXPRESSED WRITTEN CONSENT OF SAMTEC, INC.

samtec

520 PARK EAST BLVD, NEW ALBANY, IN 47150
PHONE: 812-944-6733 FAX: 812-948-5047
e-Mail info@SAMTEC.com code 55322