

DO NOT
SCALE FROM
THIS PRINT

DESIGNED & DIMENSIONED
IN INCHES[MILLIMETERS]

FIGURE 1
SEAF MATED WITH SEAM

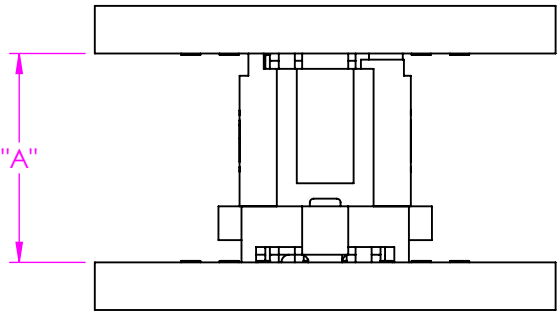


TABLE 1											
SEAF LEAD STYLE										WIPE	
		-05.0		-06.0		-06.5		-07.5			
		"A" FULLY MATED	"A" MAX	"A" FULLY MATED	"A" MAX	"A" FULLY MATED	"A" MAX	"A" FULLY MATED	"A" MAX	FULLY MATED	MIN @ "A" MAX
SEAM LEAD STYLE	-02.0	.276 [7.00]	.305 [7.74]	.315 [8.00]	.344 [8.74]	.335 [8.50]	.364 [9.24]	.374 [9.50]	.403 [10.24]	.044 [1.12]	.015 [0.38]
	-03.0	.315 [8.00]	.344 [8.74]	.354 [9.00]	.383 [9.74]	.374 [9.50]	.403 [10.24]	.413 [10.50]	.442 [11.24]	.044 [1.12]	.015 [0.38]
	-03.5	.335 [8.50]	.364 [9.24]	.374 [9.50]	.403 [10.24]	.394 [10.00]	.423 [10.74]	.433 [11.00]	.462 [11.74]	.044 [1.12]	.015 [0.38]
	-06.5	.453 [11.50]	.482 [12.24]	.492 [12.50]	.521 [13.24]	.512 [13.00]	.541 [13.74]	.551 [14.00]	.580 [14.74]	.044 [1.12]	.015 [0.38]
	-07.0	.472 [12.00]	.501 [12.74]	.512 [13.00]	.541 [13.74]	.532 [13.50]	.561 [14.24]	.571 [14.50]	.600 [15.24]	.044 [1.12]	.015 [0.38]
	-09.0	.551 [14.00]	.580 [14.74]	.591 [15.00]	.620 [15.74]	.610 [15.50]	.639 [16.24]	.650 [16.50]	.679 [17.24]	.044 [1.12]	.015 [0.38]
	-11.0	.630 [16.00]	.659 [16.74]	.669 [17.00]	.698 [17.74]	.689 [17.50]	.718 [18.24]	.728 [18.50]	.757 [19.24]	.044 [1.12]	.015 [0.38]
	-13.0	.709 [18.00]	.738 [18.74]	.748 [19.00]	.777 [19.74]	.768 [19.50]	.797 [20.24]	.807 [20.50]	.836 [21.24]	.044 [1.12]	.015 [0.38]

NOTES:
1. ALL DIMENSIONS BASED ON NOMINAL VALUES FOR SAMTEC RECOMMENDED PCB LAYOUTS.
2. ALTHOUGH MAX DIMENSIONS ARE LISTED SAMTEC RECOMMENDS FULLY MATING COMPONENTS.

• PROPRIETARY NOTE •
THIS DOCUMENT CONTAINS CONFIDENTIAL AND PROPRIETARY INFORMATION AND ALL DESIGN, MANUFACTURING, REPRODUCTION, USE, PATENT RIGHTS AND SALES RIGHTS ARE EXPRESSLY RESERVED BY SAMTEC, INC. THIS DOCUMENT SHALL NOT BE DISCLOSED, IN WHOLE OR PART, TO ANY UNAUTHORIZED PERSON OR ENTITY NOR REPRODUCED, TRANSFERRED OR INCORPORATED IN ANY OTHER PROJECT IN ANY MANNER WITHOUT THE EXPRESS WRITTEN CONSENT OF SAMTEC, INC.



520 PARK EAST BLVD, NEW ALBANY, IN 47150
PHONE: 812-944-6733 FAX: 812-948-5047
e-Mail info@SAMTEC.com code 55322

FIGURE 2
SEAF MATED WITH SEAM-RA

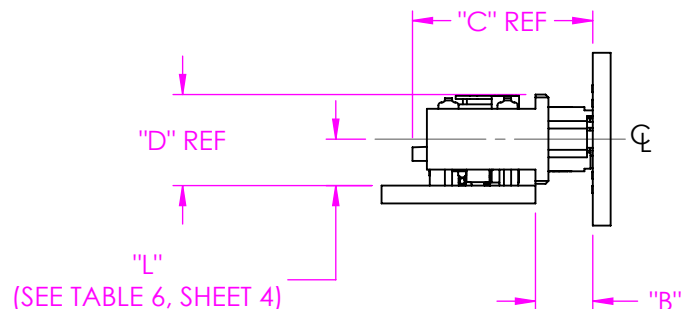


TABLE 2											
		SEAF LEAD STYLE								WPE	
		-05.0		-06.0		-06.5		-07.5			
		"B" FULLY MATED	"B" MAX	"B" FULLY MATED	"B" MAX	"B" FULLY MATED	"B" MAX	"B" FULLY MATED	"B" MAX		
SEAM-RA No OF ROWS	-04	.199 [5.05]	.228 [5.79]	.238 [6.05]	.267 [6.79]	.258 [6.55]	.287 [7.29]	.297 [7.55]	.326 [1.12]	.044 [1.12]	.015 [0.38]
	-06	.199 [5.05]	.228 [5.79]	.238 [6.05]	.267 [6.79]	.258 [6.55]	.287 [7.29]	.297 [7.55]	.326 [8.29]	.044 [1.12]	.015 [0.38]
	-08	.199 [5.05]	.228 [5.79]	.238 [6.05]	.267 [6.79]	.258 [6.55]	.287 [7.29]	.297 [7.55]	.326 [8.29]	.044 [1.12]	.015 [0.38]
	-10	.199 [5.05]	.228 [5.79]	.238 [6.05]	.267 [6.79]	.258 [6.55]	.287 [7.29]	.297 [7.55]	.326 [8.29]	.044 [1.12]	.015 [0.38]

TABLE 3										
		SEAF LEAD STYLE								
		-05.0		-06.0		-06.5		-07.5		
		"C" FULLY MATED	"C" MAX	"C" FULLY MATED	"C" MAX	"C" FULLY MATED	"C" MAX	"C" FULLY MATED	"C" MAX	
SEAM-RA No OF ROWS	-04	.626 [15.90]	.655 [16.64]	.665 [16.90]	.694 [17.64]	.685 [17.40]	.714 [18.14]	.724 [18.40]	.753 [19.14]	.316 [8.03]
	-06	.758 [19.25]	.787 [19.99]	.797 [20.25]	.826 [20.99]	.817 [20.75]	.846 [21.49]	.856 [21.75]	.885 [22.49]	.416 [10.57]
	-08	.858 [21.79]	.887 [22.53]	.897 [22.79]	.926 [23.53]	.917 [23.29]	.946 [24.03]	.956 [24.29]	.985 [25.03]	.516 [13.11]
	-10	.958 [24.33]	.987 [25.07]	.997 [25.33]	1.026 [26.07]	1.017 [25.83]	1.046 [26.57]	1.056 [26.83]	1.085 [27.57]	.616 [15.65]

• PROPRIETARY NOTE •
THIS DOCUMENT CONTAINS CONFIDENTIAL AND
PROPRIETARY INFORMATION AND ALL DESIGN,
MANUFACTURING, REPRODUCTION, USE, PATENT RIGHTS
AND SALES RIGHTS ARE EXPRESSLY RESERVED BY SAMTEC,
INC. THIS DOCUMENT SHALL NOT BE DISCLOSED, IN WHOLE
OR PART, TO ANY UNAUTHORIZED PERSON OR ENTITY NOR
REPRODUCED, TRANSFERRED OR INCORPORATED IN ANY
OTHER PROJECT IN ANY MANNER WITHOUT THE EXPRESS
WRITTEN CONSENT OF SAMTEC, INC.

samtec

520 PARK EAST BLVD, NEW ALBANY, IN 47150
PHONE: 812-944-6733 FAX: 812-948-5047
e-Mail info@SAMTEC.com code 55322

FIGURE 3
SEAM MATED WITH SEAF-RA

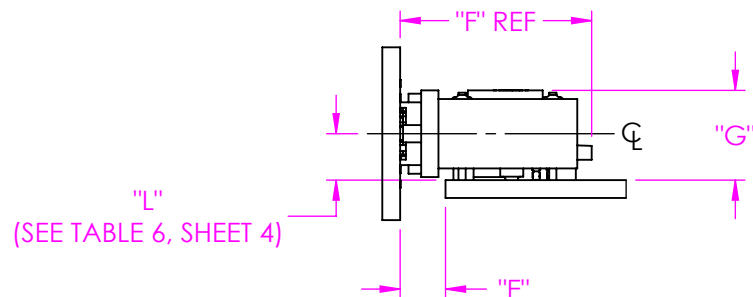


TABLE 4
SEAMLEAD STYLE

		SEAMLEAD STYLE														WIPE	
		-02.0		-03.0		-03.5		-06.5		-07.0		-09.0		-11.0		FULLY MATED	MIN @ "E" MAX
		"E" FULLY MATED	"E" MAX	"E" FULLY MATED	"E" MAX	"E" FULLY MATED	"E" MAX	"E" FULLY MATED	"E" MAX	"E" FULLY MATED	"E" MAX	"E" FULLY MATED	"E" MAX	"E" FULLY MATED	"E" MAX		
SEAF-RA No OF ROWS	-04	.158 [4.01]	.187 [4.75]	.197 [5.01]	.226 [5.75]	.217 [5.51]	.246 [6.25]	.337 [8.56]	.366 [9.30]	.355 [9.01]	.384 [9.75]	.434 [11.01]	.463 [11.75]	.513 [13.03]	.542 [13.77]	.044 [1.12]	.015 [0.38]
	-06	.158 [4.01]	.187 [4.75]	.197 [5.01]	.226 [5.75]	.217 [5.51]	.246 [6.25]	.337 [8.56]	.366 [9.30]	.355 [9.01]	.384 [9.75]	.434 [11.01]	.463 [11.75]	.513 [13.03]	.542 [13.77]	.044 [1.12]	.015 [0.38]
	-08	.158 [4.01]	.187 [4.75]	.197 [5.01]	.226 [5.75]	.217 [5.51]	.246 [6.25]	.337 [8.56]	.366 [9.30]	.355 [9.01]	.384 [9.75]	.434 [11.01]	.463 [11.75]	.513 [13.03]	.542 [13.77]	.044 [1.12]	.015 [0.38]
	-10	.158 [4.01]	.187 [4.75]	.197 [5.01]	.226 [5.75]	.217 [5.51]	.246 [6.25]	.337 [8.56]	.366 [9.30]	.355 [9.01]	.384 [9.75]	.434 [11.01]	.463 [11.75]	.513 [13.03]	.542 [13.77]	.044 [1.12]	.015 [0.38]

TABLE 5
SEAMLEAD STYLE

TABLE 5																
		SEAM LEAD STYLE														
		-02.0		-03.0		-03.5		-06.5		-07.0		-09.0		-11.0		
		"F" FULLY MATED	"F" MAX	"F" FULLY MATED	"F" MAX	"F" FULLY MATED	"F" MAX	"F" FULLY MATED	"F" MAX	"F" FULLY MATED	"F" MAX	"F" FULLY MATED	"F" MAX	"F" FULLY MATED	"F" MAX	
SEAF-RA No Of ROWS	-04	.665 [16.89]	.694 [17.63]	.704 [17.89]	.733 [18.63]	.724 [18.39]	.753 [19.13]	.845 [21.46]	.874 [22.20]	.863 [21.92]	.892 [22.66]	.942 [23.93]	.971 [24.67]	1.021 [25.94]	1.050 [26.68]	.312 [7.92]
	-06	.777 [19.74]	.806 [20.47]	.816 [20.74]	.845 [21.47]	.836 [21.24]	.865 [21.97]	.956 [24.28]	.985 [25.02]	.975 [24.77]	1.004 [25.50]	1.054 [26.78]	1.083 [27.51]	1.133 [28.79]	1.162 [29.52]	.412 [10.46]
	-08	.877 [22.28]	.906 [23.01]	.916 [23.28]	.945 [24.01]	.936 [23.78]	.965 [24.51]	1.056 [26.82]	1.085 [27.56]	1.075 [27.31]	1.104 [28.04]	1.154 [29.32]	1.183 [30.05]	1.233 [31.33]	1.262 [32.06]	.512 [13.00]
	-10	.977 [24.82]	1.006 [25.55]	1.016 [25.82]	1.045 [26.55]	1.036 [26.32]	1.065 [27.05]	1.156 [29.36]	1.185 [30.10]	1.175 [29.85]	1.204 [30.58]	1.254 [31.86]	1.283 [32.59]	1.333 [33.87]	1.362 [34.60]	.612 [15.54]

• **PROPRIETARY NOTE** •
THIS DOCUMENT CONTAINS CONFIDENTIAL AND PROPRIETARY INFORMATION AND ALL DESIGN, MANUFACTURING, REPRODUCTION, USE, PATENT RIGHTS AND SALES RIGHTS ARE EXPRESSLY RESERVED BY SAMTEC, INC. THIS DOCUMENT SHALL NOT BE DISCLOSED, IN WHOLE OR PART, TO ANY UNAUTHORIZED PERSON OR ENTITY NOR REPRODUCED, TRANSFERRED OR INCORPORATED IN ANY OTHER PROJECT IN ANY MANNER WITHOUT THE EXPRESS WRITTEN CONSENT OF SAMTEC, INC.

samtec

520 PARK EAST BLVD, NEW ALBANY, IN 47150
PHONE: 812-944-6733 FAX: 812-948-5047
e-Mail info@SAMTEC.com code 55322

SHEET 3 OF 8

FIGURE 4
SEAF-RA -04 ROW MATED WITH SEAM-RA -04 ROW

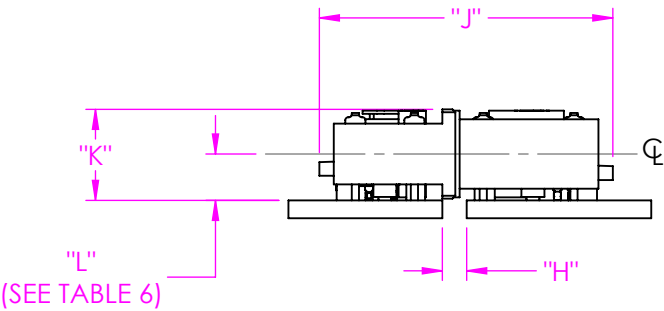


FIGURE 5
SEAF-RA -06 ROW MATED WITH SEAM-RA -06 ROW
(SAME AS -04 ROW EXCEPT AS SHOWN)

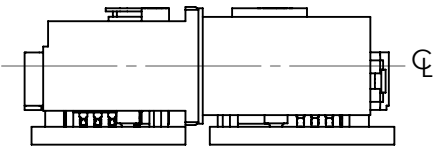


TABLE 6																	
		SEAF-RA										WIPE					
		"H" FULLY MATED		"H" MAX		"J" FULLY MATED		"J" MAX		"K"		"L"		FULLY MATED		MIN @ "H" MAX	
SEAM-RA No OF ROWS	-04	.085	[2.16]	.114	[2.90]	1.019	[25.88]	1.048	[26.62]	.316	[8.03]	.161	[4.09]	.044	[1.12]	.015	[0.38]
	-06	.085	[2.16]	.114	[2.90]	1.262	[32.05]	1.291	[32.79]	.416	[10.57]	.211	[5.36]	.044	[1.12]	.015	[0.38]
	-08	.085	[2.16]	.114	[2.90]	1.462	[37.13]	1.491	[37.87]	.516	[13.11]	.261	[6.63]	.044	[1.12]	.015	[0.38]
	-10	.085	[2.16]	.114	[2.90]	1.662	[42.21]	1.691	[42.95]	.616	[15.65]	.311	[7.90]	.044	[1.12]	.015	[0.38]

• PROPRIETARY NOTE •
THIS DOCUMENT CONTAINS CONFIDENTIAL AND PROPRIETARY INFORMATION AND ALL DESIGN, MANUFACTURING, REPRODUCTION, USE, PATENT RIGHTS AND SALES RIGHTS ARE EXPRESSLY RESERVED BY SAMTEC, INC. THIS DOCUMENT SHALL NOT BE DISCLOSED, IN WHOLE OR PART, TO ANY UNAUTHORIZED PERSON OR ENTITY NOR REPRODUCED, TRANSFERRED OR INCORPORATED IN ANY OTHER PROJECT IN ANY MANNER WITHOUT THE EXPRESS WRITTEN CONSENT OF SAMTEC, INC.



520 PARK EAST BLVD, NEW ALBANY, IN 47150
PHONE: 812-944-6733 FAX: 812-948-5047
e-Mail info@SAMTEC.com code 55322
SHEET 4 OF 8

FIGURE 6
SEAFc MATED WITH SEAR

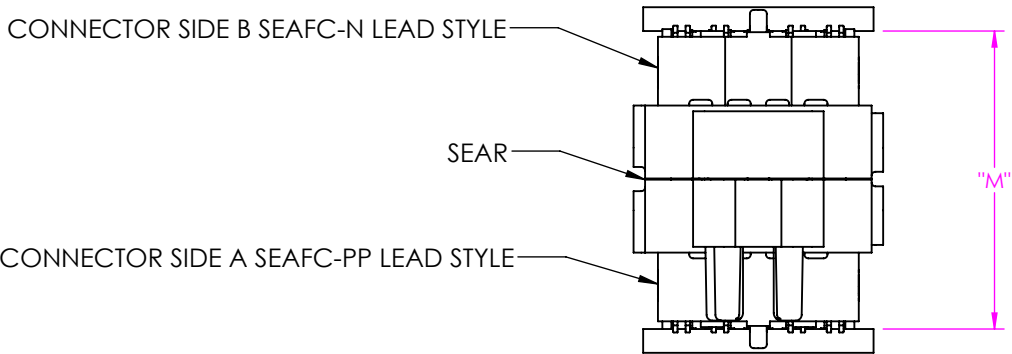


TABLE 7					
		SEAFc LEAD STYLE		WIPE	
		-05.0			
		"M" FULLY MATED	"M" MAX	FULLY MATED	MIN @ "M" MAX
SEAR LEAD STYLE	-10.0	.787 [20.00]	.825 [20.97]	.053 [1.35]	.015 [0.38]
	-20.0	1.181 [30.00]	1.219 [30.97]	.053 [1.35]	.015 [0.38]
	-30.0	1.575 [40.00]	1.613 [40.97]	.053 [1.35]	.015 [0.38]
	-31.0	1.614 [41.00]	1.652 [41.97]	.053 [1.35]	.015 [0.38]

• PROPRIETARY NOTE •
THIS DOCUMENT CONTAINS CONFIDENTIAL AND PROPRIETARY INFORMATION AND ALL DESIGN, MANUFACTURING, REPRODUCTION, USE, PATENT RIGHTS AND SALES RIGHTS ARE EXPRESSLY RESERVED BY SAMTEC, INC. THIS DOCUMENT SHALL NOT BE DISCLOSED, IN WHOLE OR PART, TO ANY UNAUTHORIZED PERSON OR ENTITY NOR REPRODUCED, TRANSFERRED OR INCORPORATED IN ANY OTHER PROJECT IN ANY MANNER WITHOUT THE EXPRESS WRITTEN CONSENT OF SAMTEC, INC.



520 PARK EAST BLVD, NEW ALBANY, IN 47150
PHONE: 812-944-6733 FAX: 812-948-5047
e-Mail info@SAMTEC.com code 55322

FIGURE 7
SEAFc-DV MATED WITH SEAC

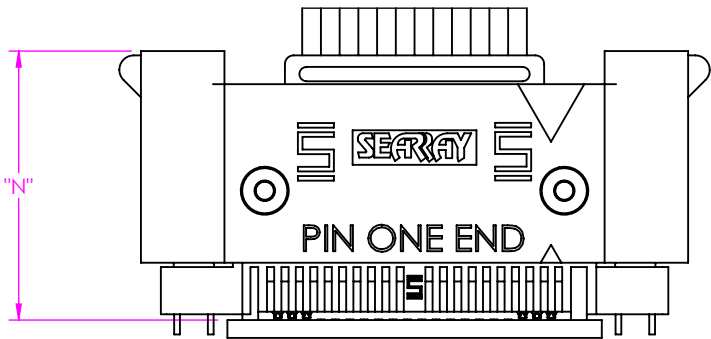


TABLE 8											
		SEAFc LEAD STYLE								WIPE	
		-05.0		-06.0		-06.5		-07.5		FULLY MATED	MIN @ "N" MAX
		"N" FULLY MATED	"N" MAX	"N" FULLY MATED	"N" MAX	"N" FULLY MATED	"N" MAX	"N" FULLY MATED	"N" MAX		
SEAC LEAD STYLE	W/T Latch	.934 [23.72]	.950 [24.13]	.973 [24.72]	.989 [25.13]	.993 [25.22]	1.009 [25.63]	1.032 [26.22]	1.048 [26.63]	.043 [1.09]	.027 [0.69]
	W/O Latch	.819 [20.80]	.847 [21.51]	.858 [21.80]	.886 [22.51]	.878 [22.30]	.906 [23.01]	.917 [23.30]	.945 [24.01]	.043 [1.09]	.015 [0.38]

• PROPRIETARY NOTE •
THIS DOCUMENT CONTAINS CONFIDENTIAL AND PROPRIETARY INFORMATION AND ALL DESIGN, MANUFACTURING, REPRODUCTION, USE, PATENT RIGHTS AND SALES RIGHTS ARE EXPRESSLY RESERVED BY SAMTEC, INC. THIS DOCUMENT SHALL NOT BE DISCLOSED, IN WHOLE OR PART, TO ANY UNAUTHORIZED PERSON OR ENTITY NOR REPRODUCED, TRANSFERRED OR INCORPORATED IN ANY OTHER PROJECT IN ANY MANNER WITHOUT THE EXPRESS WRITTEN CONSENT OF SAMTEC, INC.

samtec
520 PARK EAST BLVD, NEW ALBANY, IN 47150
PHONE: 812-944-6733 FAX: 812-948-5047
e-Mail info@SAMTEC.com code 55322

FIGURE 8
SEAC MATED WITH SEAF-RA

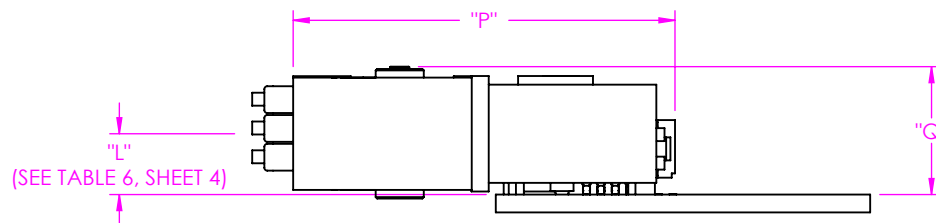


TABLE 9

TABLE 9								
		SEAC LEAD STYLE				WIPE		
		W/T Latch		W/O Latch				
		"P" FULLY MATED	"P" MAX	"P" FULLY MATED	"P" MAX	FULLY MATED	MIN @ "P" MAX	
SEAF-RA No OF ROWS	-04	1.315 [33.40]	1.330 [33.78]	1.200 [30.48]	1.228 [31.19]	.043 [1.09]	.015 [0.38]	.336 [8.53]
	-06	1.427 [36.25]	1.442 [36.63]	1.312 [33.32]	1.340 [34.04]	.043 [1.09]	.015 [0.38]	.436 [11.07]
	-08	1.527 [38.79]	1.542 [39.17]	1.412 [35.86]	1.440 [36.58]	.043 [1.09]	.015 [0.38]	.536 [13.61]
	-10	1.627 [41.33]	1.642 [41.71]	1.512 [38.40]	1.540 [39.12]	.043 [1.09]	.015 [0.38]	.636 [16.15]

• **PROPRIETARY NOTE** •
THIS DOCUMENT CONTAINS CONFIDENTIAL AND PROPRIETARY INFORMATION AND ALL DESIGN, MANUFACTURING, REPRODUCTION, USE, PATENT RIGHTS AND SALES RIGHTS ARE EXPRESSLY RESERVED BY SAMTEC, INC. THIS DOCUMENT SHALL NOT BE DISCLOSED, IN WHOLE OR PART, TO ANY UNAUTHORIZED PERSON OR ENTITY NOR REPRODUCED, TRANSFERRED OR INCORPORATED IN ANY OTHER PROJECT IN ANY MANNER WITHOUT THE EXPRESS WRITTEN CONSENT OF SAMTEC, INC.

samtec

520 PARK EAST BLVD, NEW ALBANY, IN 47150
PHONE: 812-944-6733 FAX: 812-948-5047
e-Mail info@SAMTEC.com code 55322

SHEET 7 OF 8

FIGURE 9
SEAM MATED WITH SEAFP-RA

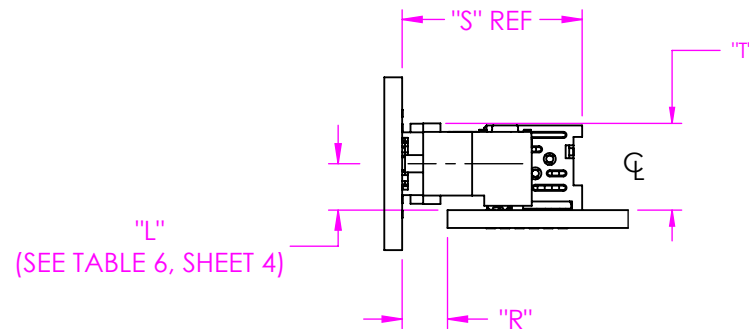


TABLE 10
SEAM LEAD STYLE

		SEAM LEAD STYLE														WIPE	
		-02.0		-03.0		-03.5		-06.5		-07.0		-09.0		-11.0		FULLY MATED	MIN @ "E" MAX
		"R" FULLY MATED	"R" MAX	"R" FULLY MATED	"R" MAX	"R" FULLY MATED	"R" MAX	"R" FULLY MATED	"R" MAX	"R" FULLY MATED	"R" MAX	"R" FULLY MATED	"R" MAX	"R" FULLY MATED	"R" MAX		
SEAFP-RA No OF ROWS	-04	.158 [4.01]	.187 [4.75]	.197 [5.01]	.226 [5.75]	.217 [5.51]	.246 [6.25]	.337 [8.56]	.366 [9.30]	.355 [9.01]	.384 [9.75]	.434 [11.01]	.463 [11.75]	.513 [13.03]	.542 [13.77]	.044 [1.12]	.015 [0.38]
	-06	.158 [4.01]	.187 [4.75]	.197 [5.01]	.226 [5.75]	.217 [5.51]	.246 [6.25]	.337 [8.56]	.366 [9.30]	.355 [9.01]	.384 [9.75]	.434 [11.01]	.463 [11.75]	.513 [13.03]	.542 [13.77]	.044 [1.12]	.015 [0.38]
	-08	.158 [4.01]	.187 [4.75]	.197 [5.01]	.226 [5.75]	.217 [5.51]	.246 [6.25]	.337 [8.56]	.366 [9.30]	.355 [9.01]	.384 [9.75]	.434 [11.01]	.463 [11.75]	.513 [13.03]	.542 [13.77]	.044 [1.12]	.015 [0.38]
	-10	.158 [4.01]	.187 [4.75]	.197 [5.01]	.226 [5.75]	.217 [5.51]	.246 [6.25]	.337 [8.56]	.366 [9.30]	.355 [9.01]	.384 [9.75]	.434 [11.01]	.463 [11.75]	.513 [13.03]	.542 [13.77]	.044 [1.12]	.015 [0.38]

TABLE 11
SEAM LEAD STYLE

TABLE 11																
		SEAM LEAD STYLE														
		-02.0		-03.0		-03.5		-06.5		-07.0		-09.0		-11.0		
		"S" FULLY MATED	"S" MAX	"S" FULLY MATED	"S" MAX	"S" FULLY MATED	"S" MAX	"S" FULLY MATED	"S" MAX	"S" FULLY MATED	"S" MAX	"S" FULLY MATED	"S" MAX	"S" FULLY MATED	"S" MAX	
SEAF-RA No Of ROWS	-04	.625 [15.88]	.654 [16.61]	.664 [16.87]	.693 [17.61]	.684 [17.37]	.713 [18.11]	.804 [20.43]	.833 [21.16]	.823 [20.90]	.852 [21.64]	.902 [22.92]	.931 [23.65]	.981 [24.93]	1.010 [25.66]	.301 [7.65]
	-06	.737 [18.72]	.766 [19.46]	.776 [19.72]	.805 [20.46]	.796 [20.22]	.825 [20.96]	.916 [23.27]	.945 [24.01]	.935 [23.75]	.964 [24.49]	1.014 [25.76]	1.043 [26.50]	1.093 [27.77]	1.122 [28.51]	.401 [10.19]
	-08	.837 [21.26]	.866 [22.00]	.876 [22.26]	.905 [23.00]	.896 [22.76]	.925 [23.50]	1.016 [25.81]	1.045 [26.55]	1.035 [26.29]	1.064 [27.03]	1.114 [28.30]	1.143 [29.04]	1.193 [30.31]	1.222 [31.05]	.501 [12.73]
	-10	.937 [23.80]	.966 [24.54]	.976 [24.80]	1.005 [25.54]	.996 [25.30]	1.025 [26.04]	1.116 [28.35]	1.145 [29.09]	1.135 [28.83]	1.164 [29.57]	1.214 [30.84]	1.243 [31.58]	1.293 [32.85]	1.322 [33.59]	.601 [15.27]

• **PROPRIETARY NOTE** •
THIS DOCUMENT CONTAINS CONFIDENTIAL AND PROPRIETARY INFORMATION AND ALL DESIGN, MANUFACTURING, REPRODUCTION, USE, PATENT RIGHTS AND SALES RIGHTS ARE EXPRESSLY RESERVED BY SAMTEC, INC. THIS DOCUMENT SHALL NOT BE DISCLOSED, IN WHOLE OR PART, TO ANY UNAUTHORIZED PERSON OR ENTITY NOR REPRODUCED, TRANSFERRED OR INCORPORATED IN ANY OTHER PROJECT IN ANY MANNER WITHOUT THE EXPRESS WRITTEN CONSENT OF SAMTEC, INC.

samtec

520 PARK EAST BLVD, NEW ALBANY, IN 47150
PHONE: 812-944-6733 FAX: 812-948-5047
e-Mail info@SAMTEC.com code 55322