

## RECOMMENDED PCB LAYOUT FOR SEAF-XX-XX-X-XX-X-RA-XX-XX

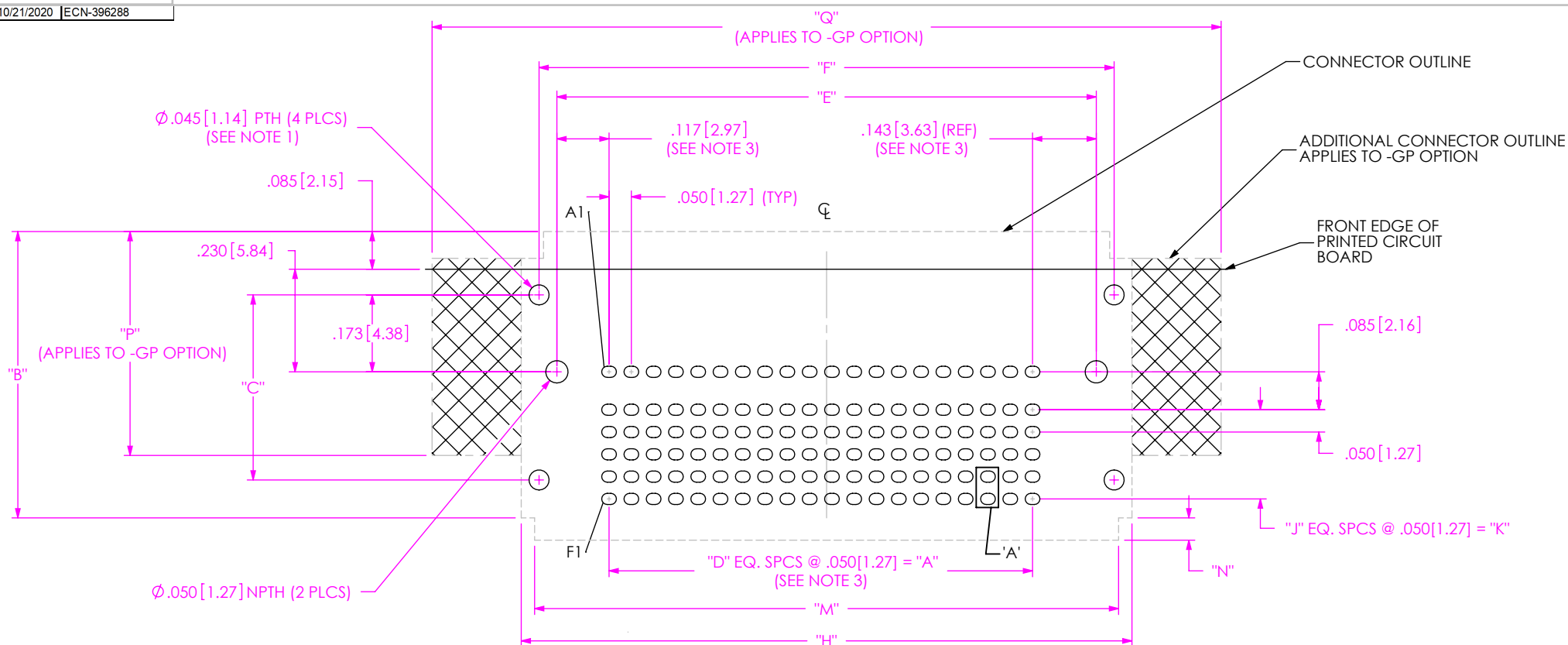


TABLE 3

No. OF ROWS PER POS.	"B"	"C"	"J"	"K"	"N"	"P"
-04	.542 [13.77]	.315 [8.00]	2	.100 [2.54]	.050 [1.27]	.542 [13.77]
-06	.642 [16.31]	.415 [10.54]	4	.200 [5.08]	.082 [2.08]	.502 [12.75]
-08	.742 [18.85]	.415 [10.54]	6	.300 [7.62]	.082 [2.08]	.642 [16.31]
-10	.842 [21.39]	.415 [10.54]	8	.400 [10.16]	.082 [2.08]	.642 [16.31]

FIG 1  
SEAF-20-01-S-06-X-RA  
(ALL DIMENSIONS ARE SYMMETRIC ABOUT THE CENTERLINE EXCEPT "A" DIMENSION)

TABLE 2

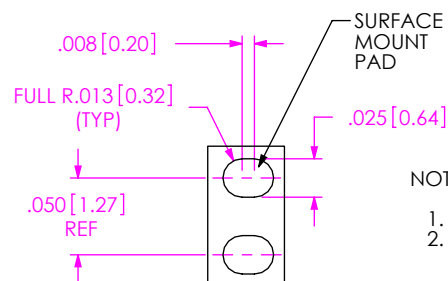
No. OF POS.	"A"	"D"	"E"	"F"	"M"
-20	.950 [24.13]	19	1.210 [30.73]	1.290 [32.77]	1.310 [33.27]
-30	1.450 [36.83]	29	1.710 [43.43]	1.790 [45.47]	1.810 [45.97]
-40	1.950 [49.53]	39	2.210 [56.13]	2.290 [58.17]	2.310 [58.67]
-50	2.450 [62.23]	49	2.710 [68.83]	2.790 [70.87]	2.810 [71.37]

NOTES:

1. TO BE SOLDERED USING PASTE IN HOLE TECHNOLOGY.
2. FOR 8 & 10 ROW PARTS, THE USE OF A PROCESSING FIXTURE IS REQUIRED. REFERENCE THE ASSEMBLY PRINT AND [WWW.SAMTEC.COM/SEARAYFIXTURE](http://WWW.SAMTEC.COM/SEARAYFIXTURE) FOR THE APPROPRIATE FIXTURE PART NUMBER AND ADDITIONAL FIXTURE INFORMATION.
3. THESE DIMENSIONS ARE NOT SYMMETRIC ABOUT THE CENTERLINE.
4. A 20-30°C TEMPERATURE DIFFERENCE MAY EXIST BETWEEN THIS HIGH-DENSITY COMPONENT AND THE BOARD SURFACE DURING REFLOW. SAMTEC RECOMMENDS A THERMAL STUDY BE PERFORMED TO UNDERSTAND THE TEMPERATURE GRADIENTS YOU MAY EXPERIENCE.
5. FOR APPLICATIONS REQUIRING INVERTED REFLOW SOLDERING, USE OF AN EPOXY ADHESIVE IS RECOMMENDED.

TABLE 1

STYLE	No. OF POS. PER ROW	"G"	"H"	"Q"
STANDARD WITH - GP OPTION	-20	N/A	1.370 [34.80]	1.770 [44.96]
	-30		1.870 [47.50]	2.270 [57.66]
	-40		2.370 [60.20]	2.770 [70.36]
	-50		2.870 [72.90]	3.270 [83.06]
WITHOUT -GP OPTION	-20	N/A	1.370 [34.80]	N/A
	-30		1.870 [47.50]	
	-40		2.370 [60.20]	
	-50		2.870 [72.90]	
WITH -LP OPTION	-20	1.790 [45.47]	2.000 [50.80]	N/A
	-30	2.290 [58.17]	2.500 [63.50]	
	-40	2.790 [70.87]	3.000 [76.20]	
	-50	3.290 [83.57]	3.500 [88.90]	



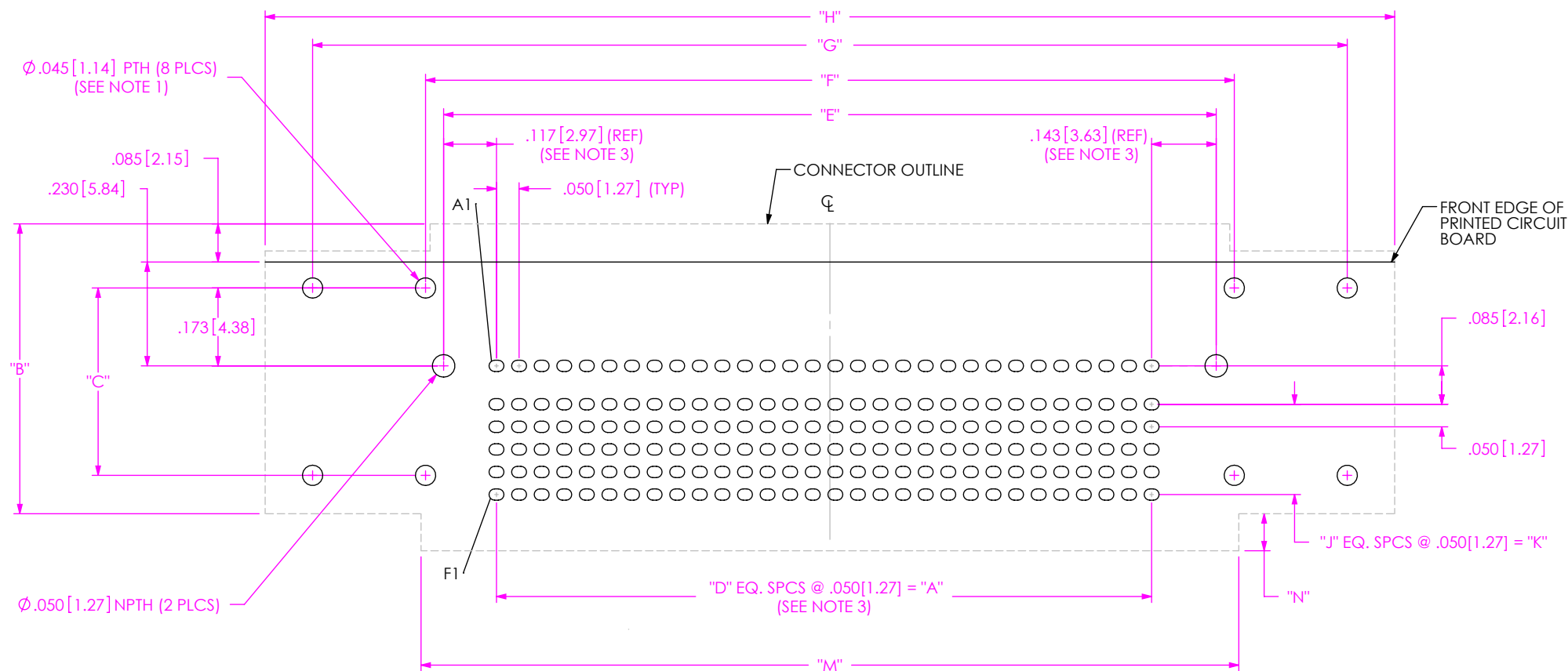
DETAIL 'A'  
SCALE 8:1

F:\dwg\misc\mktg\footprnt\SEAF-XX-XX-X-XX-X-RA-XX-XX-FOOTPRINT.SLDDRW

PROPRIETARY NOTE  
THIS DOCUMENT CONTAINS CONFIDENTIAL AND PROPRIETARY INFORMATION AND ALL DESIGN, MANUFACTURING, REPRODUCTION, USE, PATENT RIGHTS AND SALES RIGHTS ARE EXPRESSLY RESERVED BY SAMTEC, INC. THIS DOCUMENT SHALL NOT BE DISCLOSED, IN WHOLE OR PART, TO ANY UNAUTHORIZED PERSON OR ENTITY NOR REPRODUCED, TRANSMITTED OR INCORPORATED IN ANY OTHER PROJECT IN ANY MANNER WITHOUT THE EXPRESS WRITTEN CONSENT OF SAMTEC, INC.

**samtec**

520 PARK EAST BLVD. NEW ALBANY, IN 47150  
PHONE: 812-944-6733 FAX: 812-948-5047  
e-Mail: [info@SAMTEC.com](mailto:info@SAMTEC.com) code: 55322



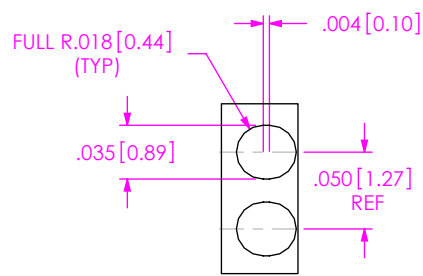
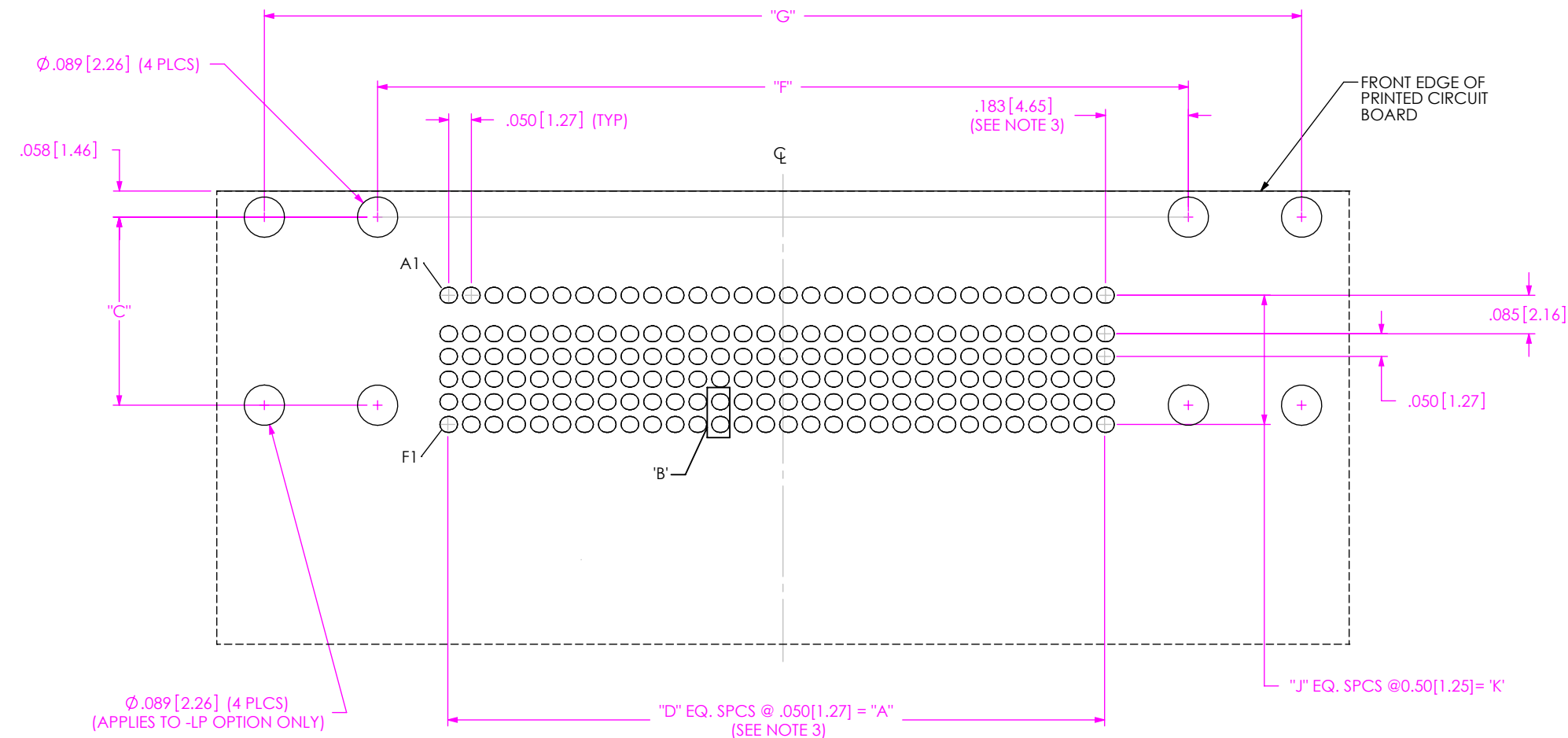
PROPRIETARY NOTE

THIS DOCUMENT CONTAINS CONFIDENTIAL AND PROPRIETARY INFORMATION AND ALL DESIGN, MANUFACTURING, REPRODUCTION, USE, PATENT RIGHTS AND SALES RIGHTS ARE EXPRESSLY RESERVED BY SAMTEC, INC. THIS DOCUMENT SHALL NOT BE DISCLOSED, IN WHOLE OR PART, TO ANY UNAUTHORIZED PERSON OR ENTITY NOR REPRODUCED, TRANSFERRED OR INCORPORATED IN ANY OTHER PROJECT IN ANY MANNER WITHOUT THE EXPRESS WRITTEN CONSENT OF SAMTEC, INC.

**samtec**

520 PARK EAST BLVD, NEW ALBANY, IN 47150  
PHONE: 812-944-6733 FAX: 812-948-5047  
e-Mail: info@SAMTEC.com code: 55322

NOTE:  
STENCIL TO BE .0060[0.152] THICK.



DETAIL 'B'  
SCALE 8:1

FIG 3  
SEAF-30-01-S-06-X-RA-LP  
(ALL DIMENSIONS ARE SYMMETRIC ABOUT THE CENTERLINE)

PROPRIETARY NOTE  
THIS DOCUMENT CONTAINS CONFIDENTIAL AND PROPRIETARY INFORMATION AND ALL DESIGN, MANUFACTURING, REPRODUCTION, USE, PATENT RIGHTS AND SALES RIGHTS ARE EXPRESSLY RESERVED BY SAMTEC, INC. THIS DOCUMENT SHALL NOT BE DISCLOSED, IN WHOLE OR PART, TO ANY UNAUTHORIZED PERSON OR ENTITY NOR REPRODUCED, TRANSFERRED OR INCORPORATED IN ANY OTHER PROJECT IN ANY MANNER WITHOUT THE EXPRESS WRITTEN CONSENT OF SAMTEC, INC.

**samtec**

520 PARK EAST BLVD, NEW ALBANY, IN 47150  
PHONE: 812-944-6733 FAX: 812-948-5047  
e-Mail: info@SAMTEC.com code: 55322

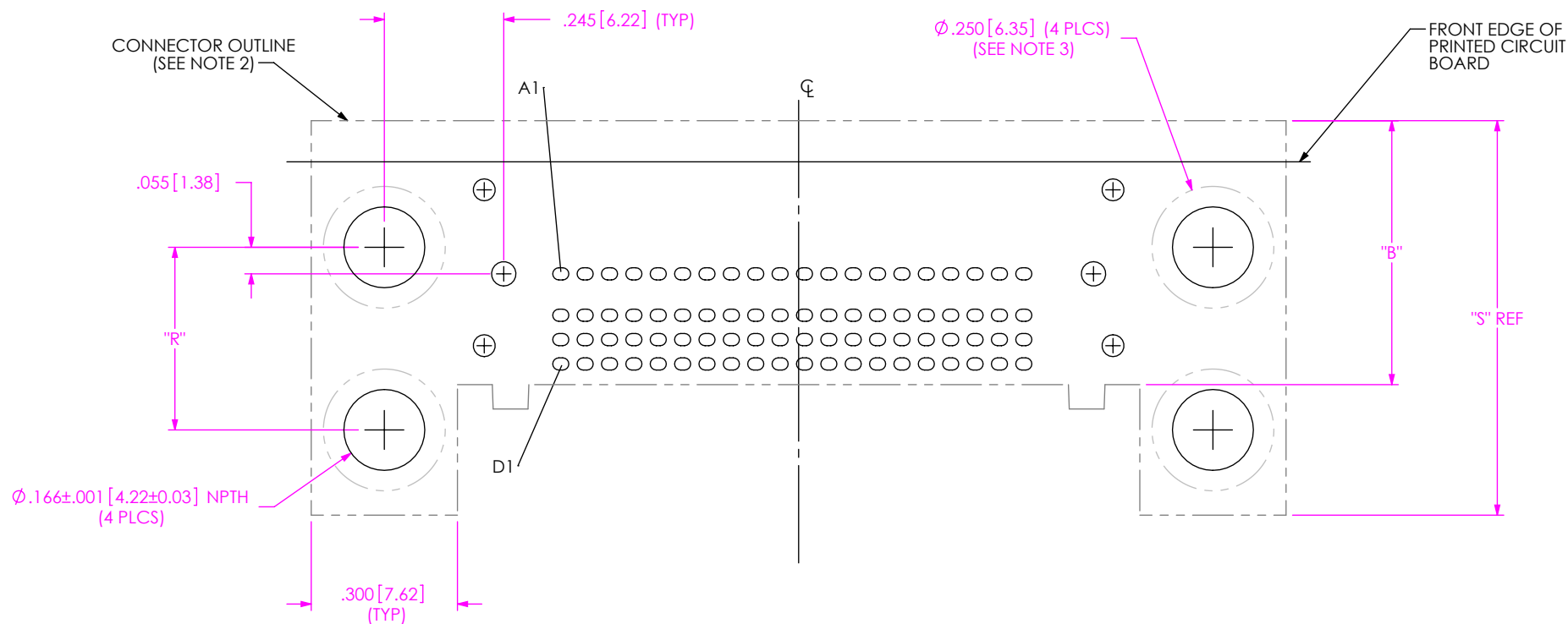


FIG 4  
GPX-XX OPTION  
(SEAF-20-01-S-04-X-RA GPX-01 SHOWN)  
(SAME AS STANDARD, UNLESS OTHERWISE STATED)  
(NOT AVAILABLE WITH -GP & -LP OPTION)  
(STENCIL LAYOUT SAME AS STANDARD)

TABLE 4

	"R"	"S"
-GPX-01	.375 [9.53]	.810 [20.57]
-GPX-02	.800 [20.32]	1.260 [32.00]

## NOTES:

1. DIMENSIONS ARE SYMMETRICAL ABOUT THE CENTER LINE UNLESS NOTED.
2. CONNECTOR ENVELOPE DIMENSIONS; OTHER COMPONENTS PLACED ON PCB SHALL AVOID THIS ZONE.
3. METRIC SCREW ENVELOPE ON BOTTOM SIDE OF PCB; OTHER COMPONENTS PLACED ON PCB SHALL AVOID THIS ZONE.

• PROPRIETARY NOTE •  
THIS DOCUMENT CONTAINS CONFIDENTIAL AND PROPRIETARY INFORMATION AND ALL DESIGN, MANUFACTURING, REPRODUCTION, USE, PATENT RIGHTS AND SALES RIGHTS ARE EXPRESSLY RESERVED BY SAMTEC, INC. THIS DOCUMENT SHALL NOT BE DISCLOSED, IN WHOLE OR PART, TO ANY UNAUTHORIZED PERSON OR ENTITY NOR REPRODUCED, TRANSFERRED OR INCORPORATED IN ANY OTHER PROJECT IN ANY MANNER WITHOUT THE EXPRESS WRITTEN CONSENT OF SAMTEC, INC.

**samtec**

520 PARK EAST BLVD, NEW ALBANY, IN 47150  
PHONE: 812-944-6733 FAX: 812-948-5047  
e-Mail: info@SAMTEC.com code: 55322