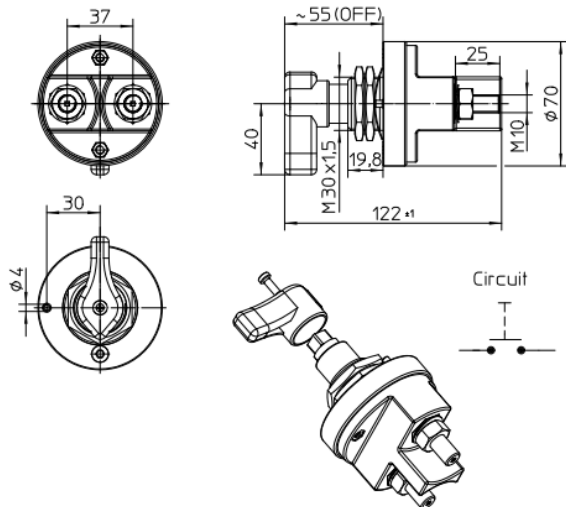


# TE FORMAT K122513

EC No.

## Battery Disconnecter 400A

Page 1 of



## Technical Data:

Case Material	PA GF black
Switch Lever Material	PA GF red
Min. Insulation Resistance	100MΩ
Dielectric Withstanding Voltage	1050V-1min.
Max. Contact Drop during Resistive Load	150mV
Voltage	to 32VDC
Duty Rating	400A
Overload	1200A-4min
	1600A-15min
	2000A-10sec
Sealing	IP 67 / IEC 529
Vibration	4G / 50-2000Hz
Shock G-Level	6G / 11ms
Weight	360g / 0.8 Pound
Temperature Range	-40°C to +85°C
Wire Section (at nominal Load)	min. 240mm <sup>2</sup>
Switch Lever	not removeable
Max. Torque (Main Contacts)	15-20Nm

Date	Name	mm	Scale
Create 20.01.2004	Grind		1:2
Edited 20.09.2019	Misk		
Check 20.09.2019	Grind		

General Tolerances  
DIN ISO 2768 dL

Drawing No:

35-413-151-R

NSN:

For this drawing we reserve the copyright in accordance with DIN ISO 6092

REVISED

REV.	DATE	DESCRIPTION	BY	CHK.
1	2004/01/20	Initial	Grind	
2	2019/09/20	Update	Misk	

NOTE:  
Bemerkungen:  
TE-CONNECTIVITY ORDER-NUMBER  
TE-Connectivity Bestellnummer  
2 DO NOT SWITCH UNDER LOAD!  
(NUR unter Last schalten!)

Technical Data:

Case Material	PA GF black
Switch Lever Material	PA GF red
Min. Insulation Resistance	100MΩ
Dielectric Withstanding Voltage	1050V-1min.
Max. Contact Drop during Resistive Load	150mV
Voltage	to 32VDC
Duty Rating	400A
Overload	1200A-4min
	1600A-15min
	2000A-10sec
Sealing	IP 67 / IEC 529
Vibration	4G / 50-2000Hz
Shock G-Level	6G / 11ms
Weight	360g / 0.8 Pound
Temperature Range	-40°C to +85°C
Wire Section (at nominal Load)	min. 240mm <sup>2</sup>
Switch Lever	not removeable
Max. Torque (Main Contacts)	15-20Nm

TE Connectivity

BATTERY DISCONNECTER 400A  
Batterie trennschalter 400A

35-413-151-R

1000 18 101101

## Bl. 1 v. 1



Gehäusewerkstoff .....	PA GF schwarz
Schalthebelwerkstoff .....	PA GF rot
Min. Isolationswiderstand .....	100MOhm
Hochspannungsfestigkeit .....	1050V/-1min.
Max. Kontaktspannungsabfall bei Nennlast.....	150mV
Betriebsspannung .....	bis 32VDC
Dauerstrom .....	400A
Überlast .....	1200A-4min.
.....	1600A-1.5min.
.....	2000A-10sec.
Schutzart .....	IP 67/ IEC 529
Vibration .....	4G/ 50-2000Hz
Stoß .....	6G/ 11ms
Gewicht .....	340g
Umgebungstemperatur bei Nennlast .....	-40°C bis +85°C
Anschlussquerschnitt bei Nennlast .....	min. 240mm <sup>2</sup>
Einbaulage .....	beliebig
Schalthebel .....	abziehbar
Max.Anzugsmoment Hauptkontakte .....	15-20Nm

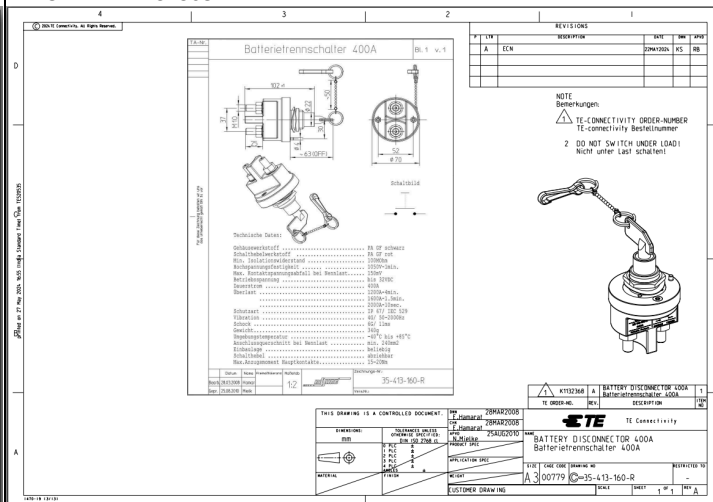
	Datum	Name	Freihafttoleranz	Maßstab  1:2
Bearb.	28.03.2008	Hamar	DIN ISO 2768 mK	
Gepr.	25.08.2010	Mielk		

Zeichnungs-Nr.:

35-413-160-R

Vers.Nr.:

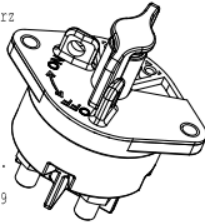
—  
Für diese Zeichnung behalten wir uns  
das Urheberrecht gemäß DIN 34 vor



## Bl. 1 v. 1



Haubenwerkstoff.....	Vyncolit schwarz	
Befestigungswerkstoff.....	PA GF schwarz	
Schalthebelwerkstoff.....	PA GF Rot	
Min.Isolationswiderstand.....	100 MOhm	
Hochspannungsfestigkeit.....	1050V-1min.	
Max.Kontaktspannungsabfall bei Nennl.....	150mV	
Betriebsspannung.....	bis 32 VDC	
Dauerstrom.....	2x500A	
Überlast.....	2x2000A-1.5min. 2x2500A-10sec.	
Schutzart.....	IP 67 / IEC 529	
Vibration.....	10G, 18-500Hz	
Schock.....	50G, 11ms	
Dauerschock-6000Zyklen.....	40G, 6ms	
Gewicht.....	ca. 650g	
Umgebungstemperatur.....	-40°C bis +85°C	
Anschlußquerschnitt bei Nennlast.....	je min.250mm	
Einbaulage.....	beliebig	
Schalthebel.....	abziehbar	
.....	verriegelbar in der "OFF" Position	
.....	verriegelbar in der "ON" Position	
Max.Anzugsmoment Hauptkontakte.....	18-22 Nm	

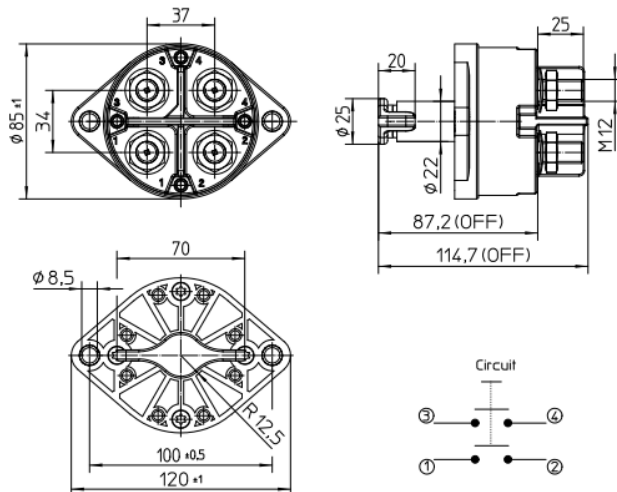


	Datum	Name	Freimaßtoleranz	Maßstab		Zeichnungs-Nr.:
Bearb.	19.12.2011	Seeger	DN ISO 2768 mK	1:2		35-524-230-R-901
Gepr.	06.03.2013	Grind				Vers.Nr.:

EC No.

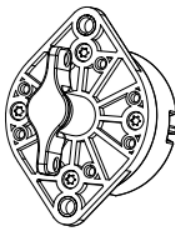
## Battery Disconnecter 2x500A

Page 1 of 1



## Technical Data:

Case Material: Cover:.....Vyncolit black  
 Base Plate:.....PA GF black  
 Switch Lever Material:.....PA GF red  
 Min. Insulation Resistance:.....100MΩ  
 Dielectric Withstanding Voltage:.....1050V-1min  
 Max. Contact Voltage Drop:.....150mV  
 Voltage:.....up to 32VDC  
 Continuous Rating:.....2x500A  
 Overload:.....2x2000A-1.5min  
 .....2x2500A-10sec  
 Sealing:.....IP 67/IEC 529  
 Vibration:.....10G 18-500Hz  
 Weight:.....1100g/2.5Pound  
 Temperature Range:.....-40°C to +85°C  
 Wire Section (at nominal load):.....min.250mm<sup>2</sup>  
 Key:.....removeable, red  
 Max. Torque (Main Contacts):.....18-22Nm



	Date	Name	mm	Scale
Drawn	02.06.2015	Mielk	1:2	
Check	29.04.2016	Grind	General Tolerances DN ISO 2768 cl.	



Drawing No.  
 35-524-230-R-903  
 Liebherr-Ident-Nr: 11836072

4 3 2 1

REVISED

TE CONNECTIVITY ORDER NUMBER  
 TE CONNECTIVITY ORDER NUMBER  
 TE STANDARD 27672021 KS RB

NOTES  
 Bemerkungen  
 1. TE-CONNECTIVITY ORDER NUMBER  
 2. DO NOT SWITCH UNDER LOAD!  
 Nicht unter Last schalten!

Technical Data:  
 Case Material: Cover:.....Vyncolit black  
 Base Plate:.....PA GF black  
 Switch Lever Material:.....PA GF red  
 Min. Insulation Resistance:.....100MΩ  
 Dielectric Withstanding Voltage:.....1050V-1min  
 Max. Contact Voltage Drop:.....150mV  
 Voltage:.....up to 32VDC  
 Continuous Rating:.....2x500A  
 Overload:.....2x2000A-1.5min  
 .....2x2500A-10sec  
 Sealing:.....IP 67/IEC 529  
 Vibration:.....10G 18-500Hz  
 Weight:.....1100g/2.5Pound  
 Temperature Range:.....-40°C to +85°C  
 Wire Section (at nominal load):.....min.250mm<sup>2</sup>  
 Key:.....removeable, red  
 Max. Torque (Main Contacts):.....18-22Nm

35-524-230-R-903

THIS DRAWING IS A CONTROLLED DOCUMENT.

TE CONNECTIVITY  
 BATTERY DISCONNECTER 2x500A  
 Batterie trennschalter 2x500A

TE ORDER NO. REV. DESCRIPTION

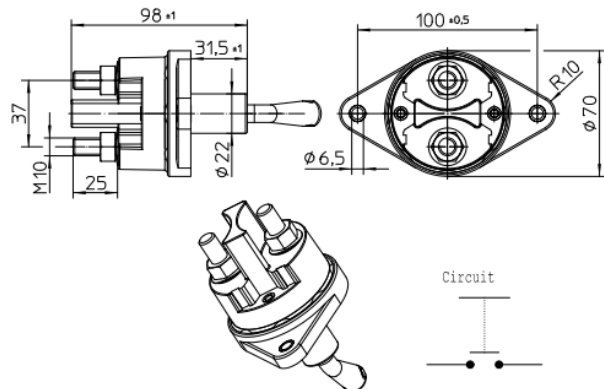
35-524-230-R-903

CUSTOMER DRAWING

EC No.  
15420

## Battery Disconnecter 500A

Page 1 of 1



## Technical Data:

Case Material: Cover	Vyncolit black
Base Plate	PA GF black
Switch Lever Material	PA GF black
Min. Insulation Resistance	100MΩ
Dielectric Withstanding Voltage	1050V-1min.
Max. Contact Drop during Resistive Load	150mV
Voltage	to 32VDC
Duty Rating	500A
Overload	1500A-4min. 2000A-1.5min. 2500A-10sec
Sealing	IP 67/ IEC 529
Vibration	4G/ 50-2000Hz
Shock G-Level	6G/ 11ms
Weight	340g/ 0.75 Pound
Temperature Range	-40°C to +85°C
Wire Section (At Nominal Load)	min. 250mm²
Switch lever	removeable
Max. Torque (Main Contacts)	15-20Nm

Date	Name	mm	Scale	Drawing No.
Drawn 11.03.2003	Bicer	1:2		35-502
Check 21.07.2009	Drech	General Tolerances DIN ISO 2768 d1	Elektrotechnik - Gehr & Co KG D - 72216 Wildberg	NSN:

REVISED

REV.	DATE	BY	APP.
1	11.03.2003	Bicer	
2	21.07.2009	Drech	

NOTE:  
Bemerkungen:  
TE-CONNECTIVITY ORDER-NUMBER  
TE-Connectivity Bestellnummer:  
2 DO NOT SWITCH UNDER LOAD!  
Nicht unter Last schalten!

Technical Data:

Case Material: Cover	Vyncolit black
Base Plate	PA GF black
Switch Lever Material	PA GF black
Min. Insulation Resistance	100MΩ
Dielectric Withstanding Voltage	1050V-1min.
Max. Contact Drop during Resistive Load	150mV
Voltage	to 32VDC
Duty Rating	500A
Overload	1500A-4min. 2000A-1.5min. 2500A-10sec
Sealing	IP 67/ IEC 529
Vibration	4G/ 50-2000Hz
Shock G-Level	6G/ 11ms
Weight	340g/ 0.75 Pound
Temperature Range	-40°C to +85°C
Wire Section (At Nominal Load)	min. 250mm²
Switch lever	removeable
Max. Torque (Main Contacts)	15-20Nm

35-502

THIS DRAWING IS A CONTROLLED DOCUMENT

DATE	11.03.2003	BY	Bicer	APP.	
DATE	21.07.2009	BY	Drech	APP.	

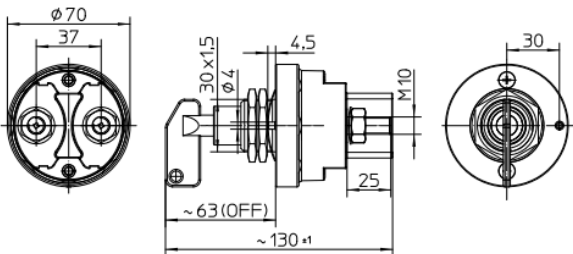
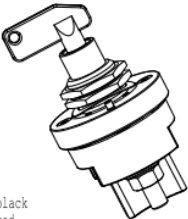
TE Connectivity

BATTERY DISCONNECTOR 500A  
Batterie trennschalter 500A

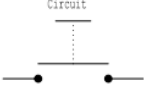
35-502

CUSTOMER DRAWING

EC No.	Battery Disconnecter 500A	Page 1 of 1
--------	---------------------------	-------------


**Circuit**



**Technical Data:**

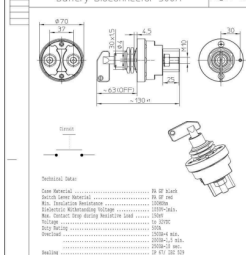
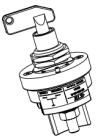
Case Material .....	PA GF black
Switch Lever Material .....	PA GF red
Min. Insulation Resistance .....	100MΩ
Dielectric Withstanding Voltage .....	1050V-1min.
Max. Contact Drop during Resistive Load .....	150mV
Voltage .....	to 32VDC
Duty Rating .....	500A
Overload .....	1500A-4 min.
.....	2000A-1,5 min.
.....	2500A-10 sec.
Sealing .....	IP 67/ IEC 529
Vibration .....	10G/ 18-500Hz
Weight .....	340g/ 0.75 Pound
Temperature Range .....	-40°C to +85°C
Wire Section (At Nominal Load) .....	min. 250mm²
Switch lever .....	not removeable
Max. Torque (Main Contacts) .....	15-20Nm

Date	Name	mm	Scale
Drawn 07.08.2018	Mielk	General Tolerances	1:2
Check 07.08.2018	Grind		



Drawing No:	
35-513-101-R	
NSN:	


EC No.	Battery Disconnecter 500A	Page 1 of 1
--------	---------------------------	-------------

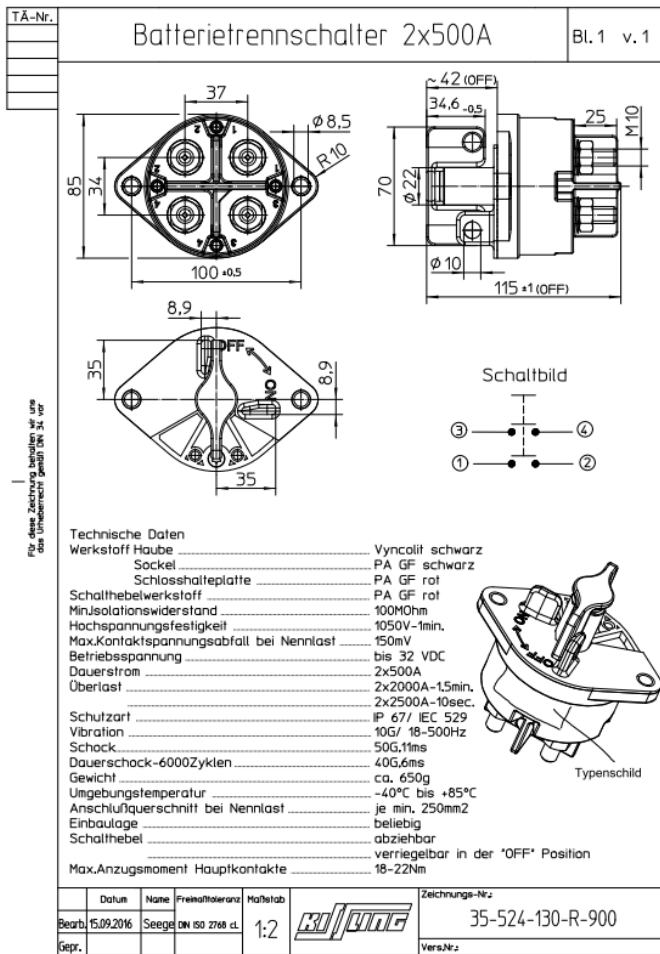
**Technical Data:**

Case Material .....	PA GF black
Switch Lever Material .....	PA GF red
Min. Insulation Resistance .....	100MΩ
Dielectric Withstanding Voltage .....	1050V-1min.
Max. Contact Drop during Resistive Load .....	150mV
Voltage .....	to 32VDC
Duty Rating .....	500A
Overload .....	1500A-4 min.
.....	2000A-1,5 min.
.....	2500A-10 sec.
Sealing .....	IP 67/ IEC 529
Vibration .....	10G/ 18-500Hz
Weight .....	340g/ 0.75 Pound
Temperature Range .....	-40°C to +85°C
Wire Section (At Nominal Load) .....	min. 250mm²
Switch lever .....	not removeable
Max. Torque (Main Contacts) .....	15-20Nm

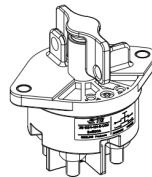
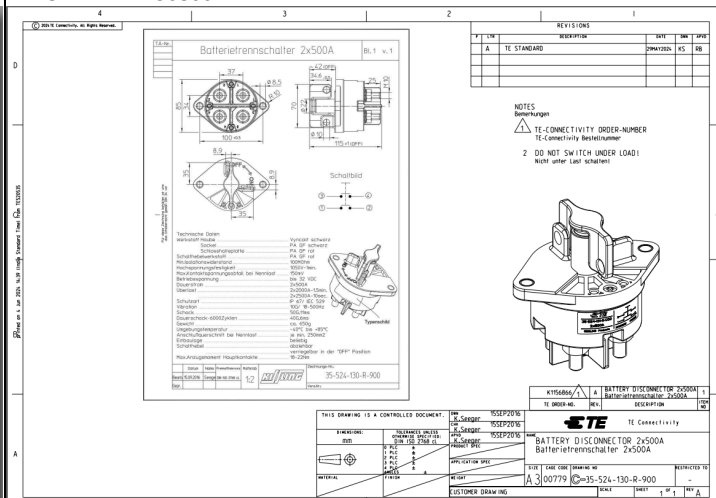
Date	Name	mm	Scale
Drawn 07.08.2018	Mielk	General Tolerances	1:2
Check 07.08.2018	Grind		



Drawing No:	
35-513-101-R	
NSN:	



Für diese Zeichnung herrschen die von uns  
das Unternehmen gemäß DIN 34 vor



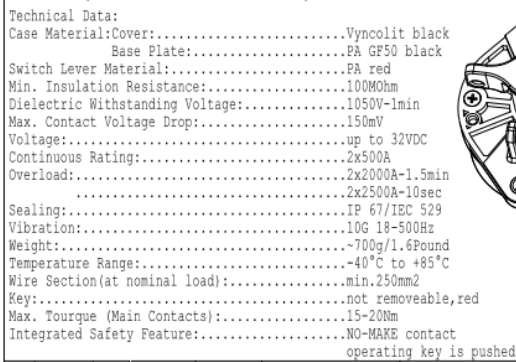
REVISIONS			
Nr.	TE STANDARD	WIDERTUM	DATE
1			2015/02/05
2			2015/02/05
3			2015/02/05
4			2015/02/05
5			2015/02/05
6			2015/02/05
7			2015/02/05
8			2015/02/05
9			2015/02/05
10			2015/02/05

NOTES	
Bemerkungen	
1. TE-CONNECTIVITY ORDER-NUMBER	
TE-Connectivity Bestellnummer	
2. DO NOT SWITCH UNDER LOAD!	
Nicht unter Last schalten!	

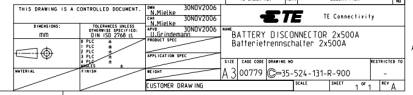
K1156866	
BATTERY DISCONNECTOR 2x500A	
BATTERIETRENNSCHALTER 2x500A	
TE CONNECTIVITY	
BATTERY DISCONNECTOR 2x500A	
Batterietrennschalter 2x500A	
A 3 00779 35-524-130-R-900	
CUSTOMER DRAWING	



## Page 1 of 1



	Date	Name	mm 	Scale 1:2		Drawing No: 35-524-131-R-900
Drawn	30.11.2006	Mielk	General Tolerances DIN ISO 2768 mK		Elektrotechnik - GmbH & Co KG D - 72218 Wildberg	NSN:
Check	30.11.2006	Grind				

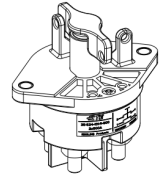


REVISIONS				
#	DATE	DESCRIPTION	DATE	BY
1	A	TE STANDARD	29MAR2024	KS DB

NOTES  
Bemerkungen

1 TE-CONNECTIVITY ORDER-NUMBER  
TE-Connectivity Bestellnummer

2 DO NOT SWITCH UNDER LOAD!  
Nicht unter Last schalten!



TA-Nr.

Batterietrennschalter 2x500A

Bl. 1 v. 1

100 ±0.5

34

37

Ø 8.5

R10

104,5 ±1

31,5 ±1

25

ca. 88 (OFF)

ca. 90

M10

30

4x Adernendhülse  
DIN 46228

3

1

11

13

4

2

12

14

schwarz

schwarz

schwarz

schwarz

schaltbild

3

1

11

13

4

2

12

14

schwarz

schwarz

schwarz

schwarz

Technische Daten:

Gehäusewerkstoff: Haube ..... Vyncolit schwarz  
Sockel ..... PA GF schwarz  
Schalthebelwerkstoff ..... PA GF rot  
Min. Isolationswiderstand ..... 100MΩ  
Hochspannungsfestigkeit ..... 1050V-1min.  
Max. Kontaktspannungsabfall bei Nennlast ..... 150mV  
Betriebsspannung ..... bis 32VDC  
Dauerstrom ..... 2x500A  
Überlast ..... 2x2000A-1.5min.  
..... 2x2500A-10sec.  
Hilfskontakt:  
Dauerstrom: ..... 10A  
Schaltstrom: ..... 24V L/R 5ms 10A  
..... 24V L/R 20ms 6A  
Schutzart-Gehäuse ..... IP 67/ IEC 529  
Vibration ..... 10G/ 18-500Hz  
Schock ..... 50G/ 11ms  
Dauerschock-6000Zyklen ..... 40G/ 6ms  
Gewicht ..... 750g  
Umgebungstemperatur ..... -40°C bis +85°C  
Anschlussquerschnitt bei Nennlast ..... je min. 250mm²  
Einbaulage ..... beliebig  
Schalthebel ..... abziehbar  
Max. Anzugsmoment (Hauptkontakte) ..... 15-20Nm

Datum

Name

Freemalltoleranz

Maßstab

Zeichnungs-Nr.

Bearb.

05.03.2013

Mielk

DIN ISO 2768 ci

1:2

35-524-170-R-A2

Gepr.

08.03.2013

Grind

Vers.Nr.

REVISED

DATE

BY

APP

1

2

3

4

Batterietrennschalter 2x500A

Bl. 1 v. 1

TE CONNECTIVITY ORDER-NUMBER

TE Connectivity Bestellnummer

2 DO NOT SWITCH UNDER LOAD!

NICHT UNTER LAST SCHALTEN!

TE CONNECTIVITY

BATTERY DISCONNECTOR 2x500A

Batterietrennschalter 2x500A

TE ORDER NO.

REV.

DESCRIPTION

35-524-170-R-A2

35-524-170-R-A2

35-524-170-R-A2

Reason for Changes:

Dear Customer, we hereby inform you of this change. This change is necessary because of data integration of Kissling products into TE system.

PCN Attributes:

Product Category:	Kind of Change:
Relays, Contactors & Switches	Drawing
Change Feature:	Potential Customer Impact:
Drawing Change	
Remarks:	

Estimated Dates:

Last Order Date (Obsolete Parts Only):	First Ship Date of Changed Items (Changed Parts Only):
	11-JUN-2024
Last Ship Date of Changed Items (Obsolete Parts Only):	Last Date for Mixed Shipments: (Changed Parts Only):
	No Mixed Shipments
Effectivity Date:	Date of First Samples:

Part Number(s) being Modified:

Part Number	Part Discontinued per PCN	Customer Drawing	Customer Part Number	Alias Part Number(s)	Substitute Part Number	Substitute Alias Part Number(s)	Description Of Difference
K1060504	NO			"35-502"			
K1121363	NO			"35-413-151-R"			

Part Number(s) being Modified:

Part Number	Part Discontinued per PCN	Customer Drawing	Customer Part Number	Alias Part Number(s)	Substitute Part Number	Substitute Alias Part Number(s)	Description Of Difference
<a href="#">K1060504</a>	NO			"35-502"			
<a href="#">K1121363</a>	NO			"35-413-151-R"			

Part Number(s) being Modified:

Part Number	Part Discontinued per PCN	Customer Drawing	Customer Part Number	Alias Part Number(s)	Substitute Part Number	Substitute Alias Part Number(s)	Description Of Difference
<a href="#">K1060504</a>	NO			"35-502"			
<a href="#">K1121363</a>	NO			"35-413-151-R"			